

DAISSY-4X1-W

~50° beam. 4X1 variant.

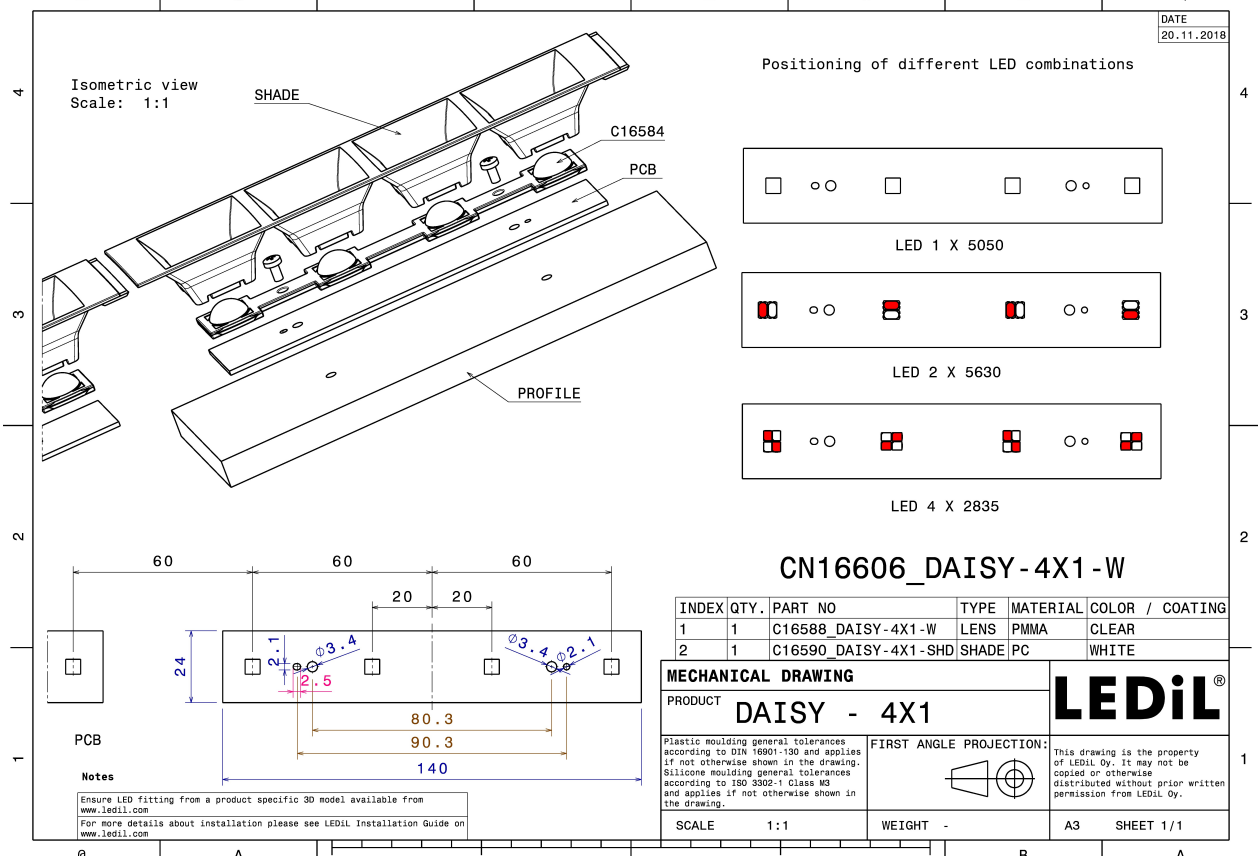
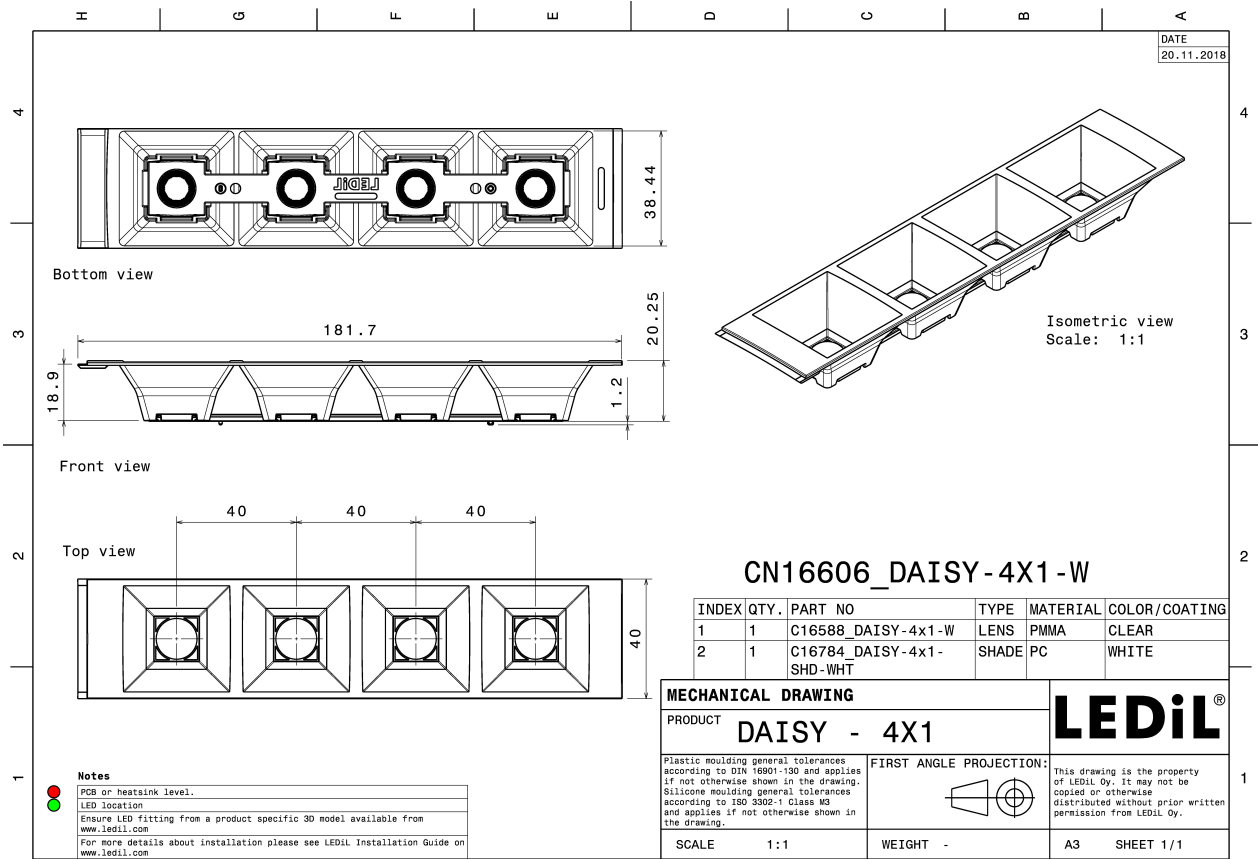
TECHNICAL SPECIFICATIONS:

Dimensions	182.0 x 40.0 mm
Height	20.2 mm
Fastening	pin, screw, clips
Colour	black
Box size	
Box weight	0 kg
Quantity in Box	504 pcs
ROHS compliant	yes ⓘ



MATERIAL SPECIFICATIONS:

Component	Type	Material	Colour
DAISSY-4X1-W	Linear lens	PMMA	clear
DAISSY-4X1-SHD	Shade	PC-ABS	black

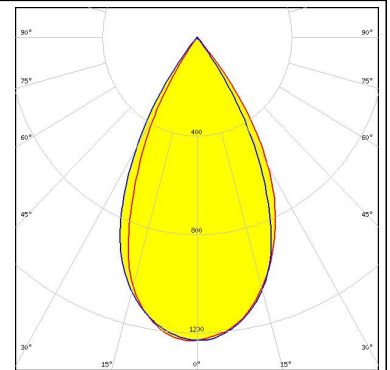


PHOTOMETRIC DATA (MEASURED):

MST

Your solutions

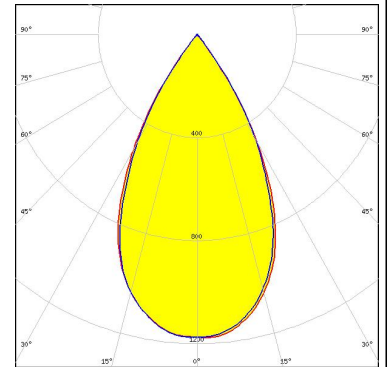
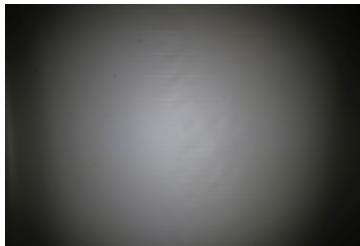
LED LinLED 156x28mm 2x200lm 827-865 2x2C 12V
 FWHM 54.0°
 Efficiency 90 %
 Peak intensity 1.200 cd/lm
 LEDs/each optic 1
 Light colour White
 Required components:



MST

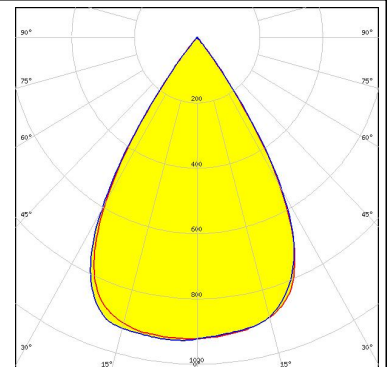
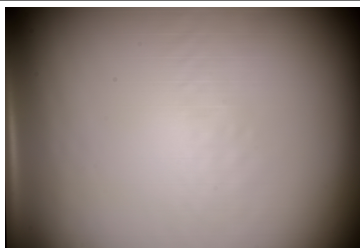
Your solutions

LED LinLED 156x28mm 400lm 8x0 2C 12V Opt G1
 FWHM 56.0°
 Efficiency 90 %
 Peak intensity 1.180 cd/lm
 LEDs/each optic 1
 Light colour White
 Required components:



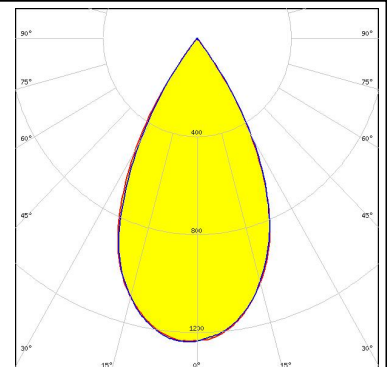
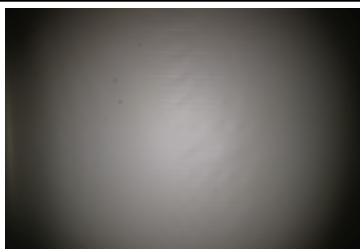
SAMSUNG

LED LM28xB Series
 FWHM 64.0°
 Efficiency 89 %
 Peak intensity 0.930 cd/lm
 LEDs/each optic 4
 Light colour White
 Required components:


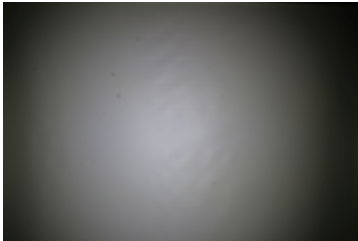
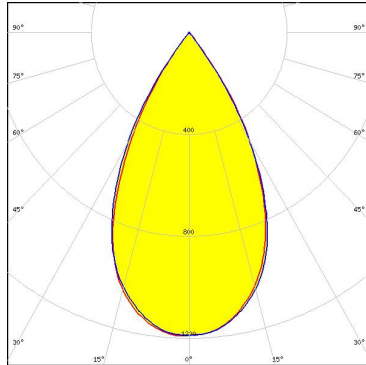

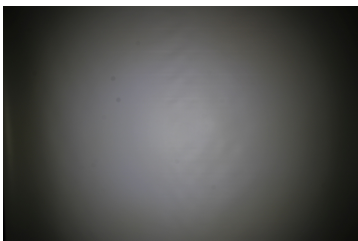
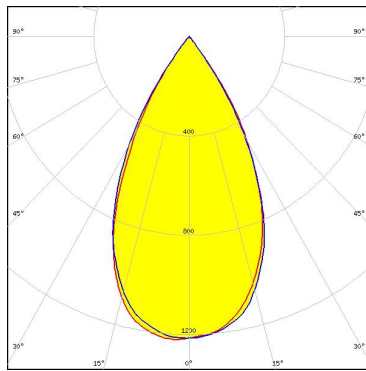


SAMSUNG

LED LM28xB Series
 FWHM 55.0°
 Efficiency 91 %
 Peak intensity 1.200 cd/lm
 LEDs/each optic 2
 Light colour White
 Required components:



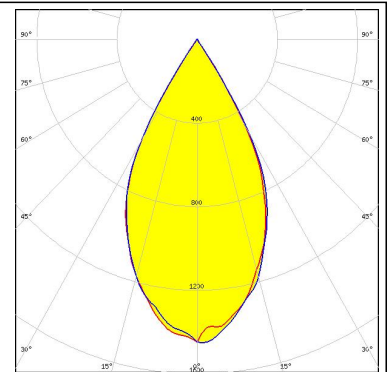
PHOTOMETRIC DATA (MEASURED):

<p> SEOUL SEMICONDUCTOR</p> <p>LED SEOUL DC 3528 FWHM 56.0° Efficiency 90 % Peak intensity 1.200 cd/lm LEDs/each optic 2 Light colour White Required components:</p>		
<p> SEOUL SEMICONDUCTOR</p> <p>LED SEOUL DC 3528 FWHM 54.0° Efficiency 90 % Peak intensity 1.200 cd/lm LEDs/each optic 2 Light colour White Required components:</p>		

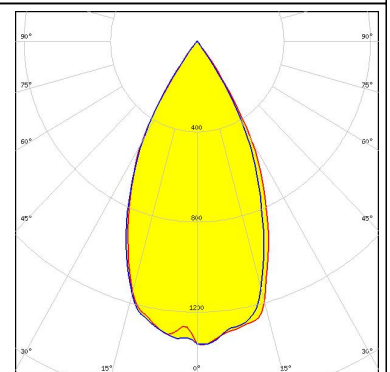
PHOTOMETRIC DATA (SIMULATED):



LED LUXEON 5050
FWHM 54.0°
Efficiency 92 %
Peak intensity 1.460 cd/lm
LEDs/each optic 1
Light colour White
Required components:



LED Duris S8
FWHM 52.0°
Efficiency 91 %
Peak intensity 1.390 cd/lm
LEDs/each optic 1
Light colour White
Required components:



GENERAL INFORMATION:

NOTE: The typical beam angle will be changed by different color, chip size and chip position tolerance. The typical total beam angle is the full angle measured where the luminous intensity is half of the peak value.

MATERIALS:

As part of our continuous research and improvement processes, and to ensure the best possible quality and availability of our products, LEDiL reserves the right to change material grades without notice.

PRODUCT DATA USER AGREEMENT AND DISCLAIMER:

The measured data in the provided downloadable LEDiL Product Datasheets and Mechanical 2D-Drawings is rounded and provided as reference for planning. LEDiL Oy's optical specifications have been verified by conducting performance testing of the products in accordance with the company's quality system. The reported data are averaged results of multiple measurements with typical variation. LEDiL Oy reserves the right to without prior notification make changes and improvements to its products.

LEDiL Oy assumes neither warranty, nor guarantee nor any other liability of any kind for the contents and correctness of the provided data. The provided data has been generated with highest diligence but the provided data may in reality not represent the complete possible variation range of all intrinsic parameters. Therefore, in certain cases a deviation from the provided data could occur.

LEDiL Oy reserves the right to undertake technical changes of its products without further notification which could lead to changes in the provided data. LEDiL Oy assumes no liability of any kind for the possible deviation from any provided data or any other damage resulting from the usage of the provided data.

The user agrees to this disclaimer and user agreement with the download or usage of the provided files.

LEDiL Oy

Joensuunkatu 13
FI-24240 SALO
Finland

LEDiL Inc.

228 West Page Street
Suite D
Sycamore IL 60178
USA

Local sales and technical support

[www.ledil.com/
where_to_buy](http://www.ledil.com/where_to_buy)

Shipping locations

Salo, Finland
Hong Kong, China

Distribution Partners

[www.ledil.com/
where_to_buy](http://www.ledil.com/where_to_buy)