

**Product number F13700_BARBARA-S-PF**

Family	Barbara	FWHM	(simulated) 12
Type	Reflector	Efficiency	-
LED	CXA/B 15xx	cd/lm	(simulated) 0.000
Color	Metal	Gerber File	Available
Diameter	70 mm		
Height	41.7 mm		
Style	Round		
Optic Material	PC		
Holder Material	-		
Fastening	Pin		
Status	On production		

**Product number F13701_BARBARA-W-PF**

Family	Barbara	FWHM	(simulated) 28
Type	Reflector	Efficiency	-
LED	CXA/B 15xx	cd/lm	(simulated) 0.000
Color	Metal	Gerber File	Available
Diameter	70 mm		
Height	41.7 mm		
Style	Round		
Optic Material	PC		
Holder Material	-		
Fastening	Socket		
Status	On production		

**Product number FCN14709_BARBARA-S-PF-RZ**

Family	Barbara	FWHM	13 degrees
Type	Reflector	Efficiency	85 %
LED	CXA/B 15xx	cd/lm	7.400
Color	Metal	Gerber File	Available
Diameter	70 mm		
Height	41.7 mm		
Style	Round		
Optic Material	PC		
Holder Material	-		
Fastening	-		
Status	On production		

With additional RZ lens.

**Product number FCN14283_BARBARA-S-PF**

Family	Barbara	FWHM	14 degrees
Type	RefPack	Efficiency	91 %
LED	CXA/B 15xx	cd/lm	8.600
Color	Metal	Gerber File	Available
Diameter	70 mm		
Height	45.2 mm		
Style	Round		
Optic Material	PC		
Holder Material	PC		
Fastening	Screw		
Status	On production		

**Product number FCN13925_BARBARA-S-PF-VERO13/18**

Family	Barbara	FWHM	15 degrees
Type	RefPack	Efficiency	89 %
LED	CXA/B 15xx	cd/lm	6.900
Color	Metal	Gerber File	Available
Diameter	70 mm		
Height	41.7 mm		
Style	Round		
Optic Material	PC		
Holder Material	-		
Fastening	-		
Status	On production		

**Product number FCN13927_BARBARA-W-PF-VERO13/18**

Family	Barbara	FWHM	30 degrees
Type	RefPack	Efficiency	88 %
LED	CXA/B 15xx	cd/lm	2.500
Color	Metal	Gerber File	Available
Diameter	70 mm		
Height	41.7 mm		
Style	Round		
Optic Material	PC		
Holder Material	-		
Fastening	-		
Status	On production		

**Product number FCN14284_BARBARA-W-PF**

Family	Barbara	FWHM	30 degrees
Type	RefPack	Efficiency	91 %
LED	CXA/B 15xx	cd/lm	2.640
Color	Clear	Gerber File	Available
Diameter	70 mm		
Height	45.2 mm		
Style	Round		
Optic Material	PC		
Holder Material	PC		
Fastening	-		
Status	On production		

**Product number FCN14710_BARBARA-W-PF-RZ**

Family	Barbara	FWHM	30 degrees
Type	Reflector	Efficiency	85 %
LED	CXA/B 15xx	cd/lm	2.200
Color	Metal	Gerber File	Available
Diameter	70 mm		
Height	41.7 mm		With additional RZ lens.
Style	Round		
Optic Material	PC		
Holder Material	-		
Fastening	-		
Status	On production		

**Product number FCN14285_BARBARA-WW-PF**

Family	Barbara	FWHM	40 degrees
Type	RefPack	Efficiency	89 %
LED	CXA/B 15xx	cd/lm	1.800
Color	Clear	Gerber File	Available
Diameter	70 mm		
Height	35 mm		
Style	Round		
Optic Material	PC		
Holder Material	PC		
Fastening	Screw		
Status	On production		

Product number FCN13929_BARBARA-WW-PF-VERO13/18

Family	Barbara	FWHM	41 degrees
Type	RefPack	Efficiency	87 %
LED	CXA/B 15xx	cd/lm	1.700
Color	Metal	Gerber File	Available
Diameter	70 mm		
Height	41.7 mm		
Style	Round		
Optic Material	PC		
Holder Material	-		
Fastening	-		
Status	On production		

Product number FCN14711_BARBARA-WW-PF-RZ

Family	Barbara	FWHM	51 degrees
Type	Reflector	Efficiency	85 %
LED	CXA/B 15xx	cd/lm	1.200
Color	Metal	Gerber File	Available
Diameter	70 mm		
Height	41.7 mm		With additional RZ sublens
Style	Round		
Optic Material	PC		
Holder Material	-		
Fastening	-		
Status	On production		

Product number FCN14286_BARBARA-XW-PF

Family	Barbara	FWHM	70 degrees
Type	RefPack	Efficiency	92 %
LED	CXA/B 15xx	cd/lm	0.760
Color	White	Gerber File	Available
Diameter	70 mm		
Height	35 mm		
Style	Round		
Optic Material	HRPC		
Holder Material	PC		
Fastening	-		
Status	On production		

**Product number FCN14311_BARBARA-XW-PF-VERO13/18**

Family	Barbara	FWHM	70 degrees
Type	RefPack	Efficiency	90 %
LED	CXA/B 15xx	cd/lm	0.720
Color	Metal	Gerber File	Available
Diameter	70 mm		
Height	42.25 mm		
Style	Round		
Optic Material	PC		
Holder Material	PC		
Fastening	Screw		
Status	On production		

Product number FCN14712_BARBARA-XW-PF-RZ

Family	Barbara	FWHM	73 degrees
Type	Reflector	Efficiency	85 %
LED	CXA/B 15xx	cd/lm	0.600
Color	White	Gerber File	Available
Diameter	70 mm		
Height	41.7 mm		With additional RZ lens.
Style	Round		
Optic Material	HRPC		
Holder Material	-		
Fastening	-		
Status	On production		

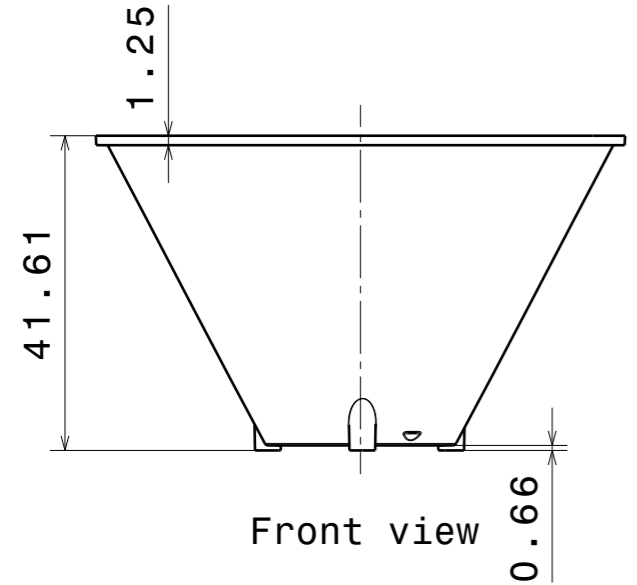
NOTE: The typical divergence will be changed by different color, chip size and chip position tolerance. The typical total divergence is the full angle measured where the luminous intensity is half of the peak value.

GENERAL INFORMATION

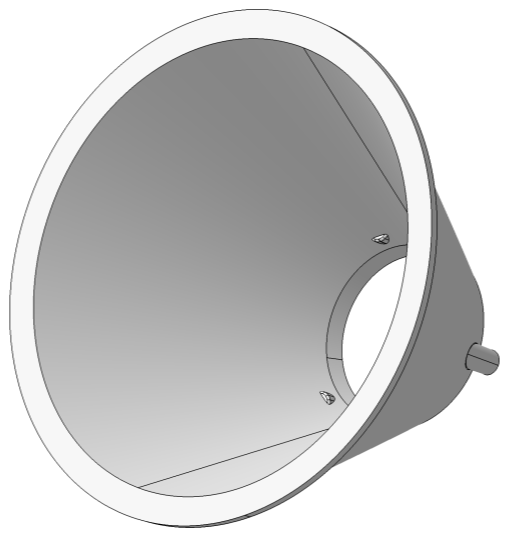
- Product series especially designed & optimized for CXA/B 15xx series of LEDs.
- Special care taken to make light distribution as uniform as possible.
- Reflector is made of aluminium coated PC (120 degrees of Celcius / 248 degrees of Fahrenheit) with protective lacquer (short term 100 degrees of Celcius / 212 degrees of Fahrenheit).
- Optic holder molded by high quality PC material (120 dergees of Celcius / 248 degrees of Fahrenheit).

Note! Due to use of high power COB's with this product, special attention to proper thermal design is highly recommended. LEDiL has no liability for direct, indirect or consecutive damages arising from the LEDiL products being used outside of the recommended temperature range.

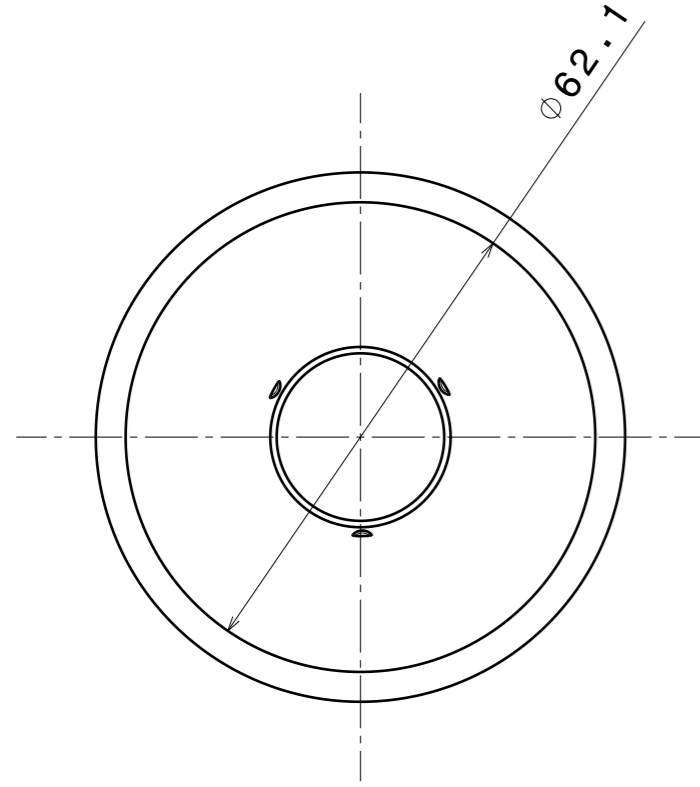
H G F E D C B A



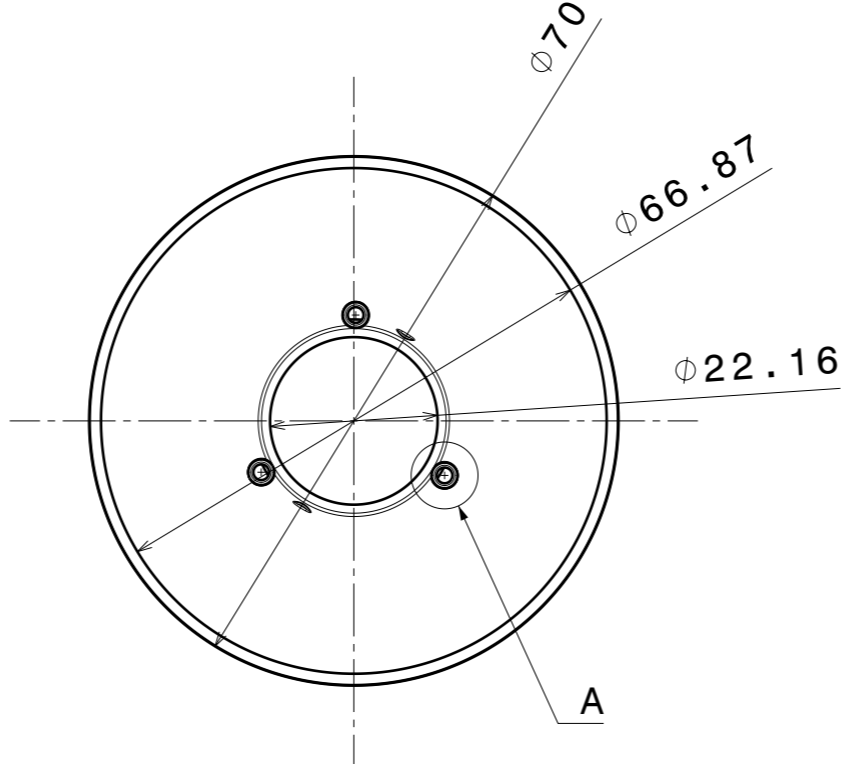
Front view



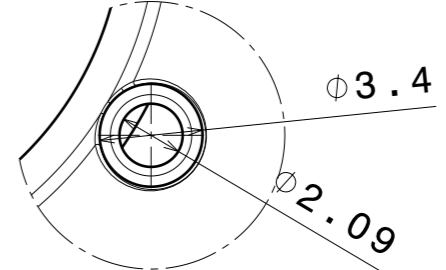
Isometric view



Top view



Bottom view



Detail A
Scale: 4:1

This drawing applies to:
 C13700_BARBARA-S-PF
 C13701_BARBARA-W-PF
 C13702_BARBARA-WW-PF
 C13703_BARBARA-XW-PF

Tolerances if not otherwise shown
 According to DIN ISO 2768-1
 Linear measures:
 Up to 30mm class M, otherwise class C.
 According to DIN ISO 2768-2
 Form and position: class L

LEDiL Ledil Oy
 Salorankatu 10
 FIN 24240 SALO
 Finland

THIRD ANGLE PROJECTION:

DRAWING TITLE
Datasheet_BARBARA-PF

This drawing is the property of LEDiL Oy. It may not be reproduced, copied or communicated without a written agreement with LEDiL Oy."

SIZE	PART NUMBER		
A3	-		

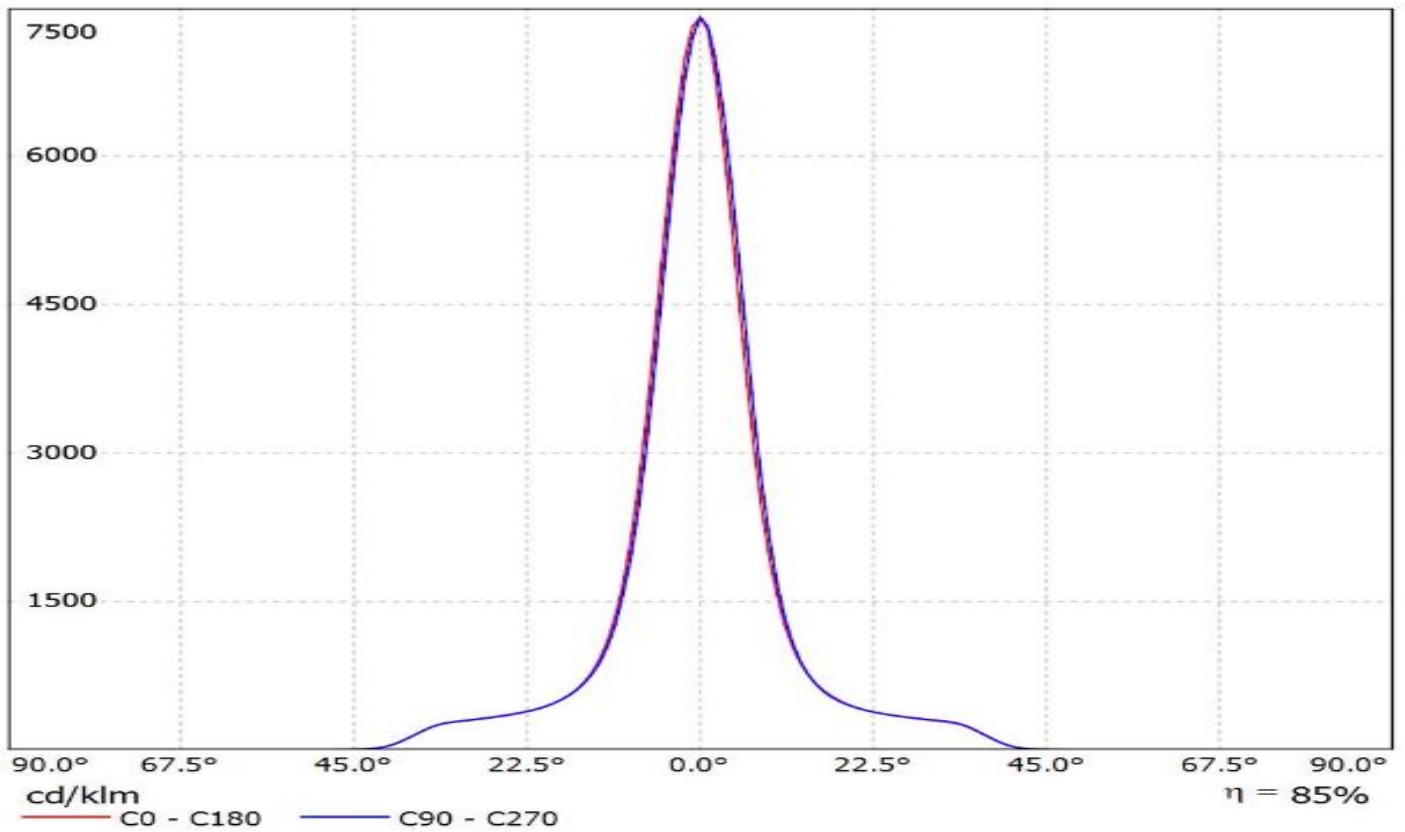
SCALE	1:1	WEIGHT (g)		SHEET	1/1
-------	-----	------------	--	-------	-----

H G F E D C B A

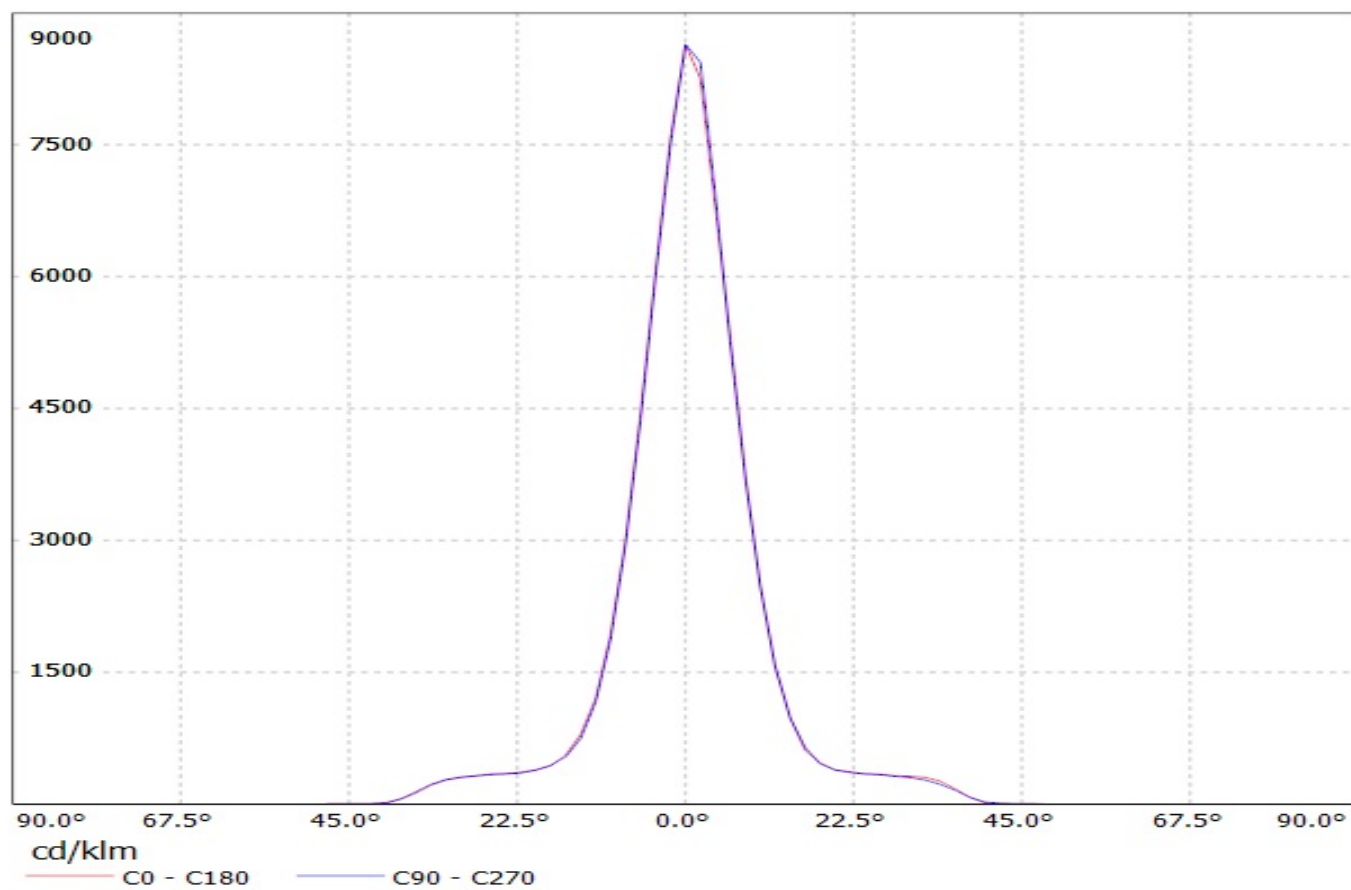
Ledil FCN14709_BARBARA-S-PF-RZ_(CXA1520) / LDC (Linear)

Luminaire: Ledil FCN14709_BARBARA-S-PF-RZ_(CXA1520)

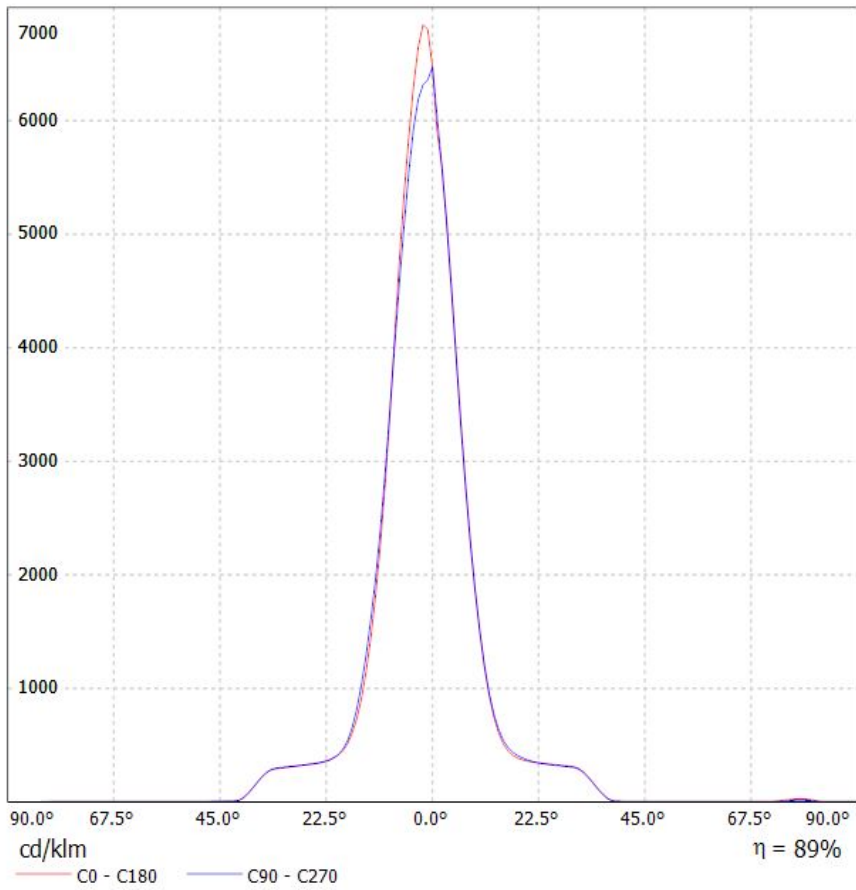
Lamps: 1 x CREE_CXA1520_(CXA1520-30F-N4-N0H-00001)
_821.16lm@250mA_CCT=3070K_P=7.88W_I=0.25A



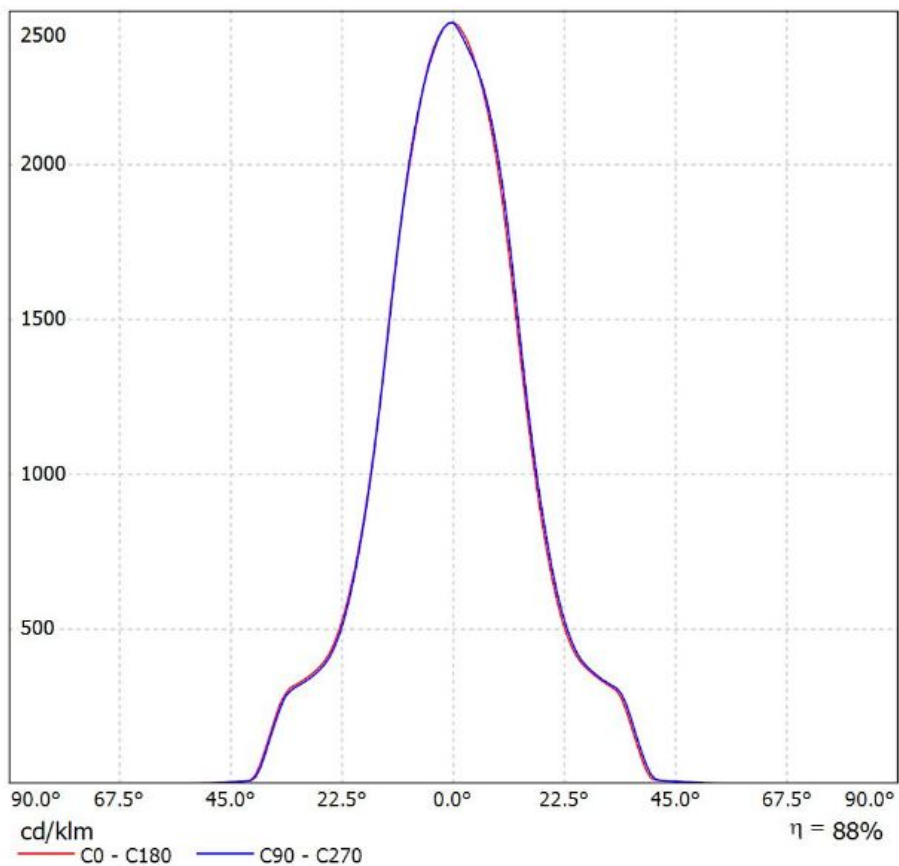
Luminaire: LEDil Oy FCN14283_BARBARA-S-PF_(CXA15) Efficiency=91%
Lamps: 1 x Cree CXA15 (CXA1507-30F-F4-N0H-00000) 212lm @ 50mA CCT=3100K P=1.7W I=50mA



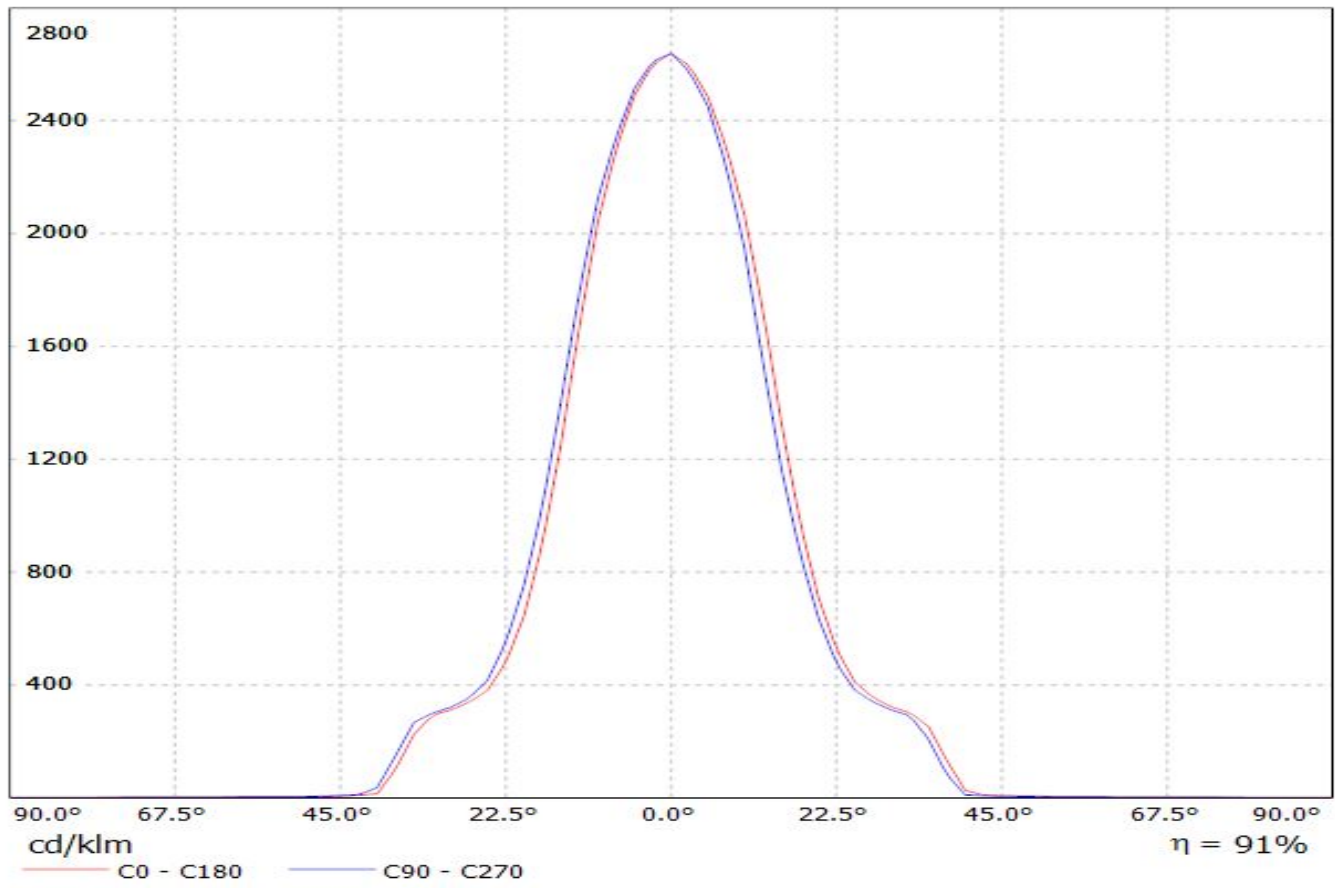
Luminaire: LEDiL Oy FCN13925_BARBARA-S-PF-VERO13/18_(CXA1520)_(441_Typ_L1) CXA1520_(CXA1520-30F-N4-N04-00001)_(441_Typ_L1)_(C13709_PF-SOCKET-VERO13-18)_995.617lm@250mA_P=8.72401W_I=0.2499A
Lamps: 1 x CXA1520_(CXA1520-30F-N4-N04-00001)_(441_Typ_L1)_(C13709_PF-SOCKET-VERO13-18)_995.617lm@250mA_P=8.72401W_I=0.2499A



Luminaire: Ledil FCN13927_BARBARA-W-PF-VERO13-18_(CXA1520) CXA1520_(CXA1520-30F-N4-N0H-00001)_(441_Typ_L1)_(C13709_PF-SOCKET-VERO13-18)_1036.14lm@250mA_P=8.825W_I=0.25A
Lamps: 1 x CXA1520_(CXA1520-30F-N4-N0H-00001)_(441_Typ_L1)_(C13709_PF-SOCKET-VERO13-18)_1036.14lm@250mA_P=8.825W_I=0.25A

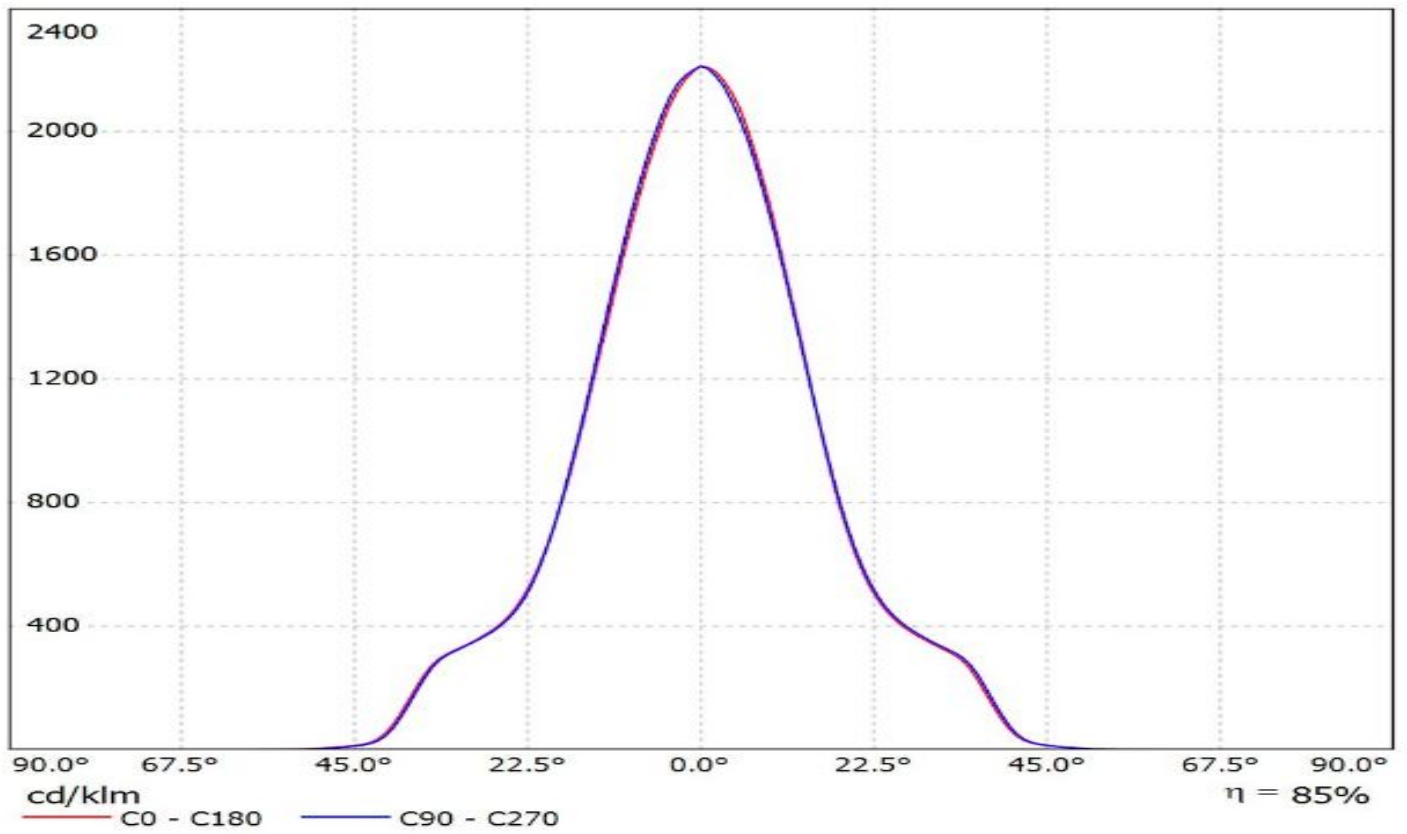


Luminaire: LEDiL Oy FCN14284_BARBARA-W-PF_(CXA15)
Lamps: 1 x Cree_CXA1507_214.008lm@50mA_P=1.64838_I=49.4mA

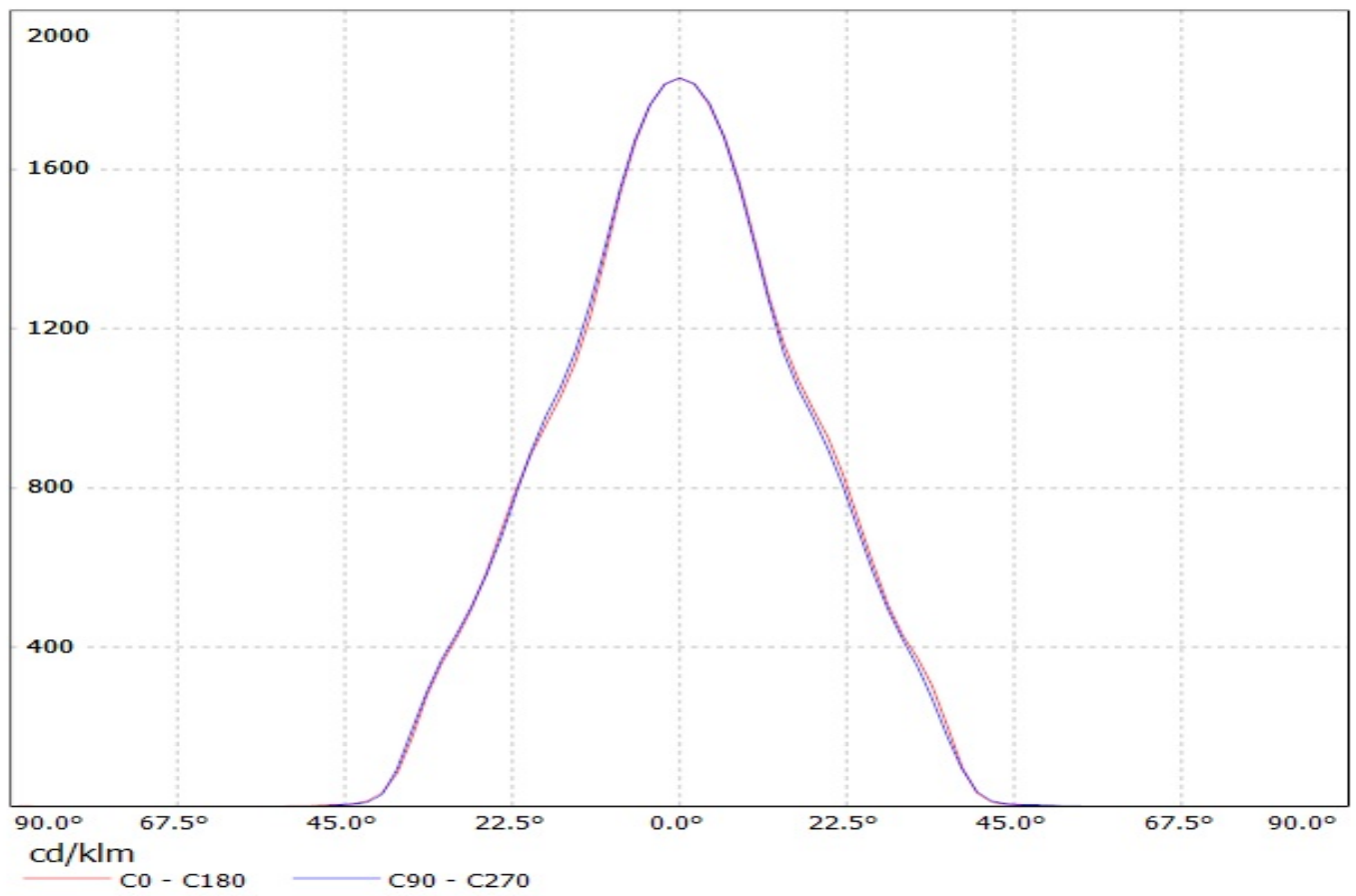


Ledil FCN14710_BARBARA-W-PF-RZ_(CXA1520) / LDC (Linear)

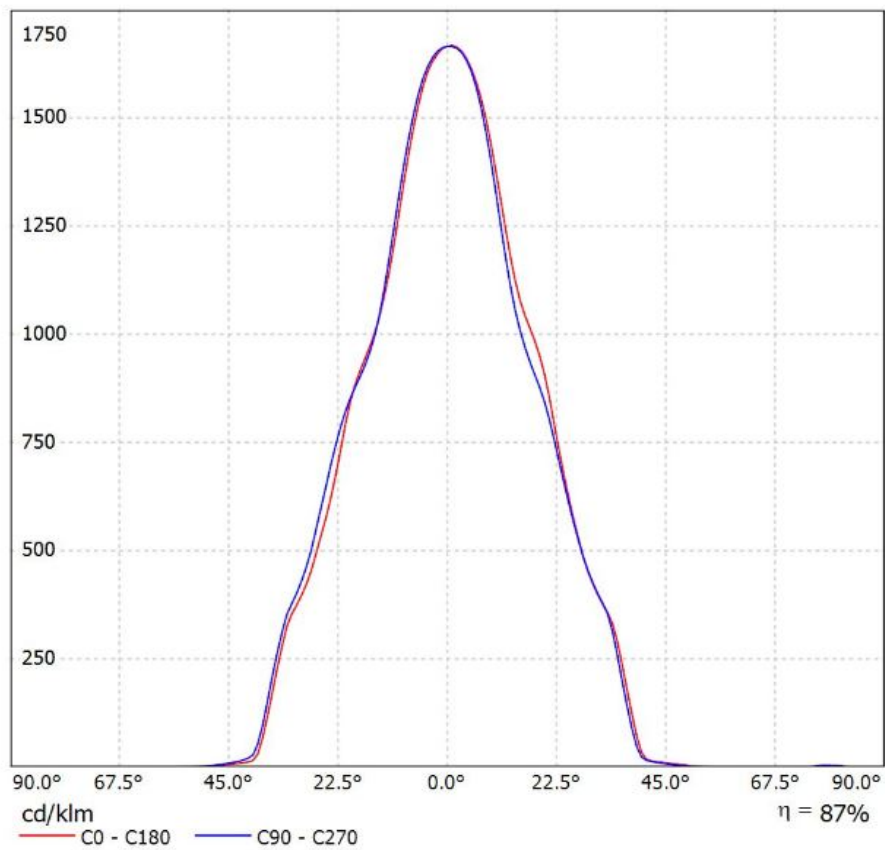
Luminaire: Ledil FCN14710_BARBARA-W-PF-RZ_(CXA1520)
Lamps: 1 x CREE_CXA1520_(CXA1520-30F-N4-N0H-00001)
_821.16lm@250mA_CCT=3070K_P=7.88W_I=0.25A



Luminaire: LEDil Oy FCN14285_BARBARA-WW-PF_(CXA1507) Efficiency=89%
Lamps: 1 x Cree CXA1507 (CXA1507-30F-F4-N0H-00000) 213lm @ 250mA CCT=3100K P=1.7W I=250mA



Luminaire: Ledil FCN13929_BARBARA-WW-PF-VERO13-18_(CXA1520) CXA1520_(CXA1520-30F-N4-N0H-00001)_(441_Typ_L1)_(C13709_PF-SOCKET-VERO13-18)_1036.14lm@250mA_P=8.825W_I=0.25A
Lamps: 1 x CXA1520_(CXA1520-30F-N4-N0H-00001)_(441_Typ_L1)_(C13709_PF-SOCKET-VERO13-18)_1036.14lm@250mA_P=8.825W_I=0.25A

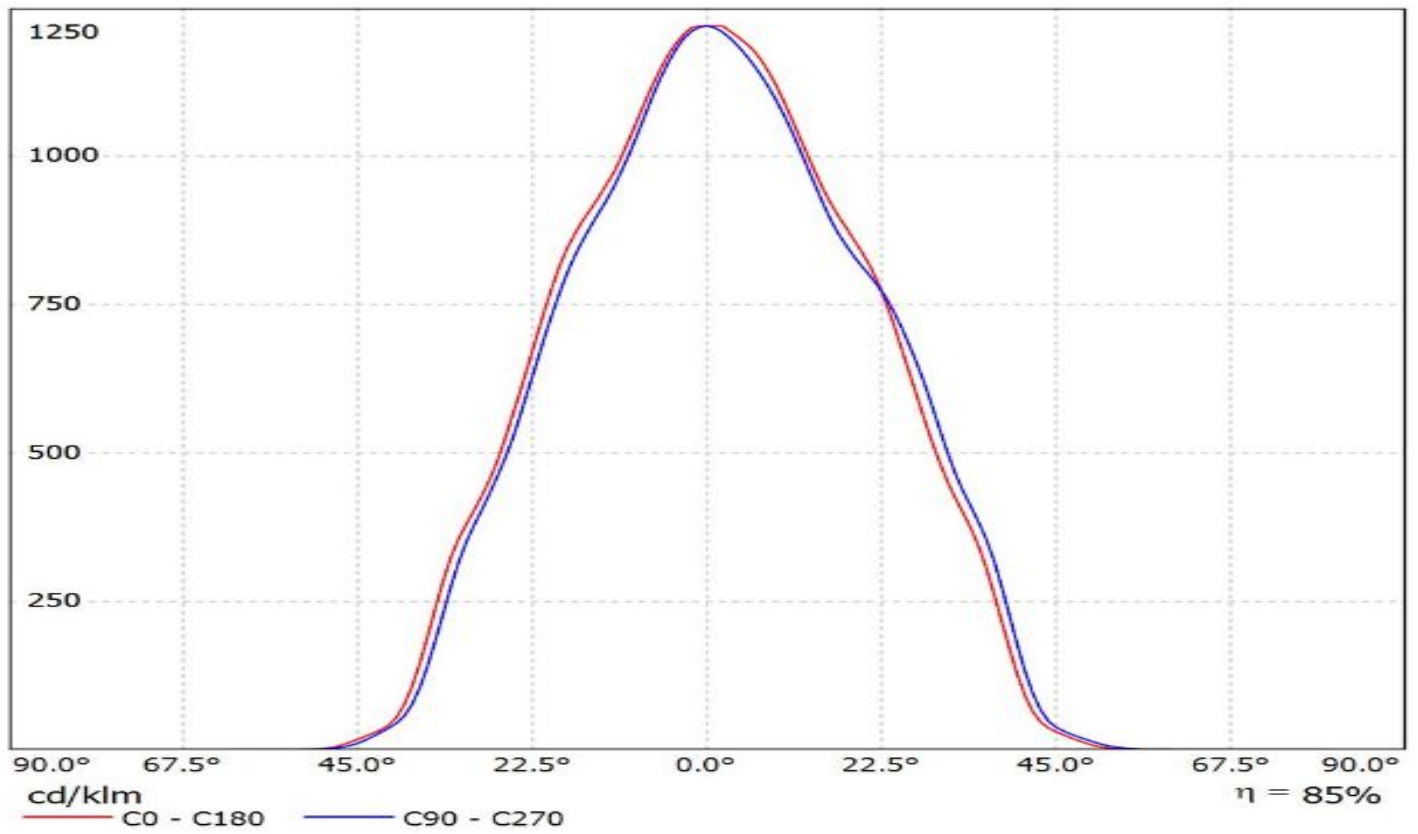


Ledil FCN14711_BARBARA-WW-PF-RZ_(CXA1520) / LDC (Linear)

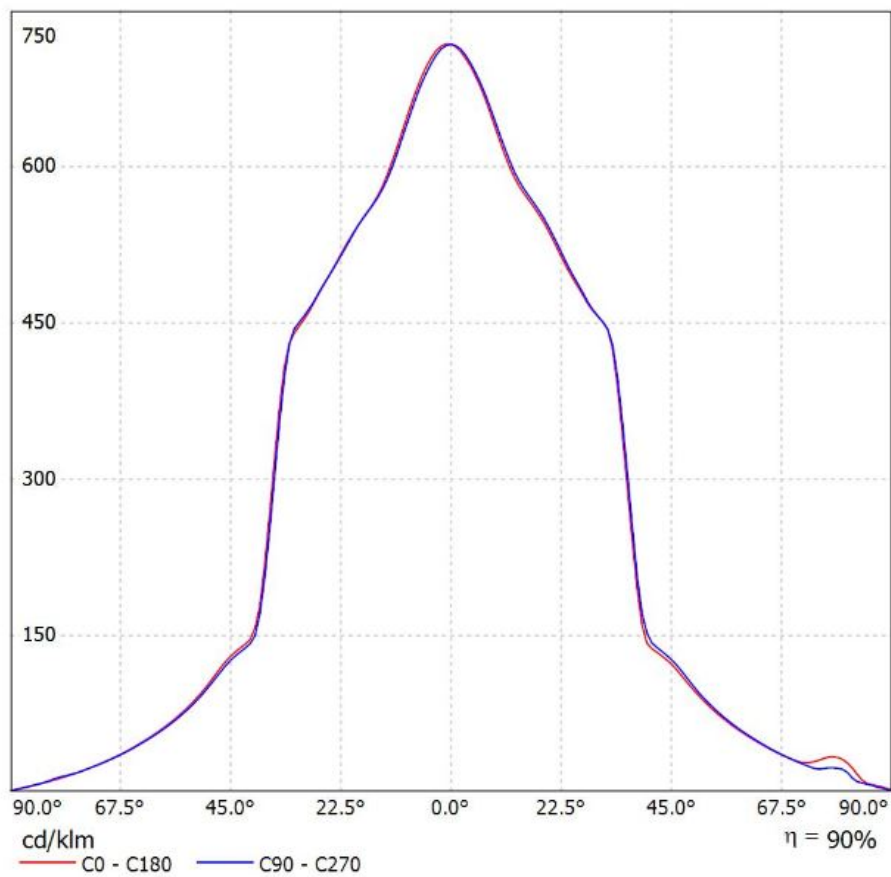
Luminaire: Ledil FCN14711_BARBARA-WW-PF-RZ_(CXA1520)

Lamps: 1 x CREE_CXA1520_(CXA1520-30F-N4-N0H-00001)

_821.16lm@250mA_CCT=3070K_P=7.88W_I=0.25A

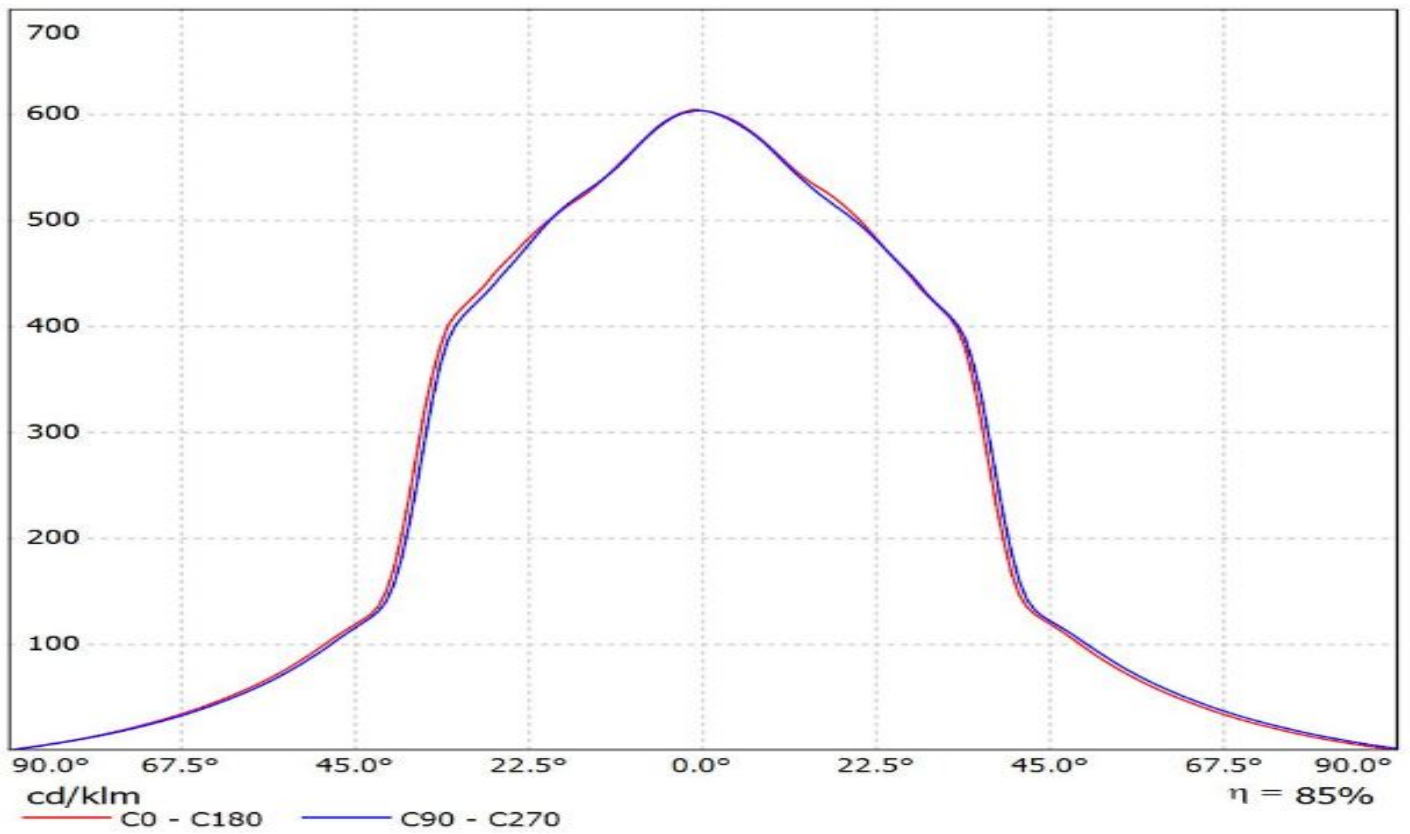


Luminaire: Ledil FCN14311_BARBARA-XW-PF-VERO13-18_(CXA1520_(CXA1520-30F-N4-N0H-00001)_(441_Typ_L1)_(C13709_PF-SOCKET-VERO13-18)_1036.14lm@250mA_P=8.825W_I=0.25A
Lamps: 1 x CXA1520_(CXA1520-30F-N4-N0H-00001)_(441_Typ_L1)_(C13709_PF-SOCKET-VERO13-18)_1036.14lm@250mA_P=8.825W_I=0.25A



Ledil FCN14712_BARBARA-XW-PF-RZ_(CXA1520) / LDC (Linear)

Luminaire: Ledil FCN14712_BARBARA-XW-PF-RZ_(CXA1520)
Lamps: 1 x CREE_CXA1520_(CXA1520-30F-N4-N0H-00001)
_821.161lm@250mA_CCT=3070K_P=7.88W_I=0.25A

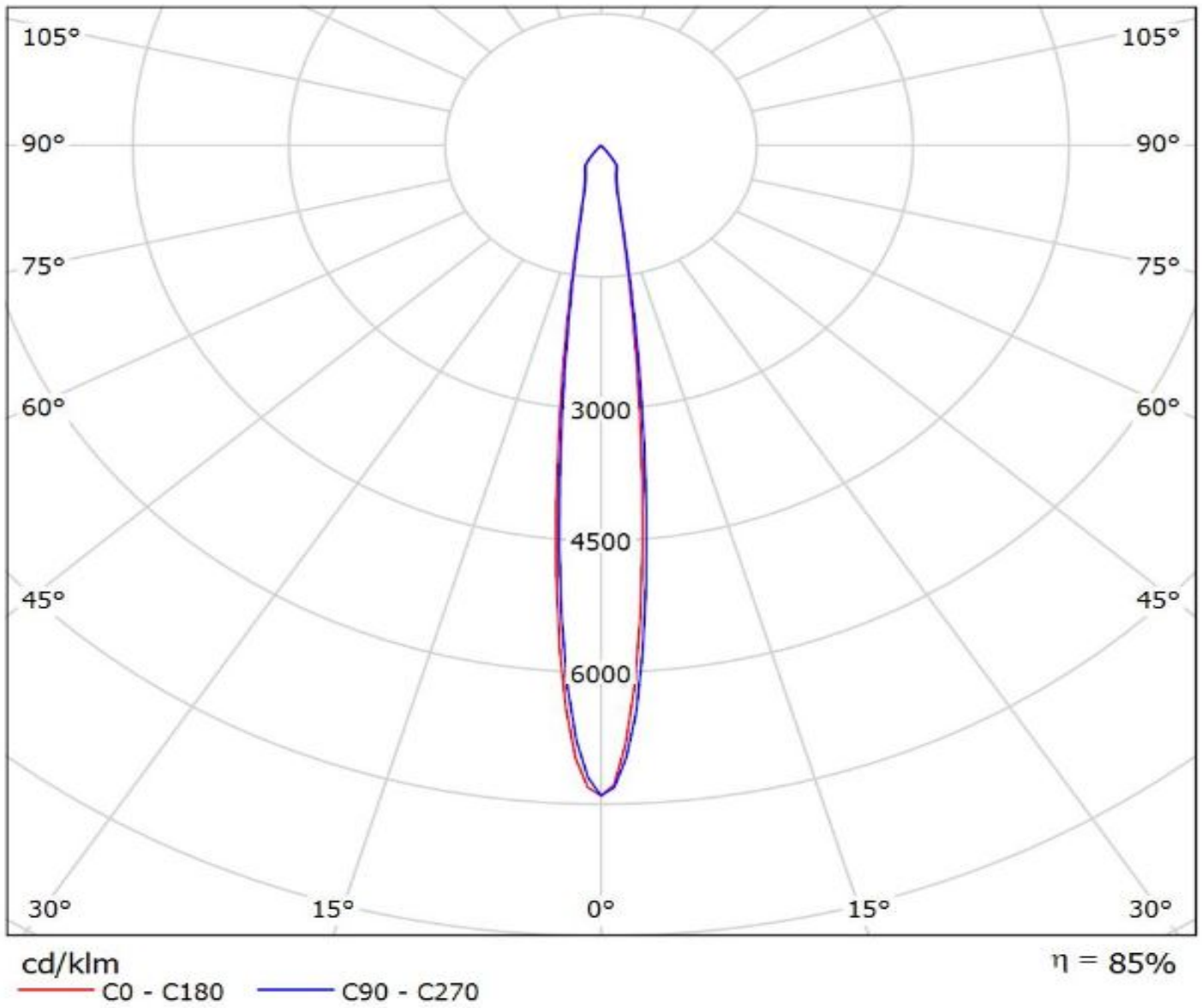


Ledil FCN14709_BARBARA-S-PF-RZ_(CXA1520) / LDC (Polar)

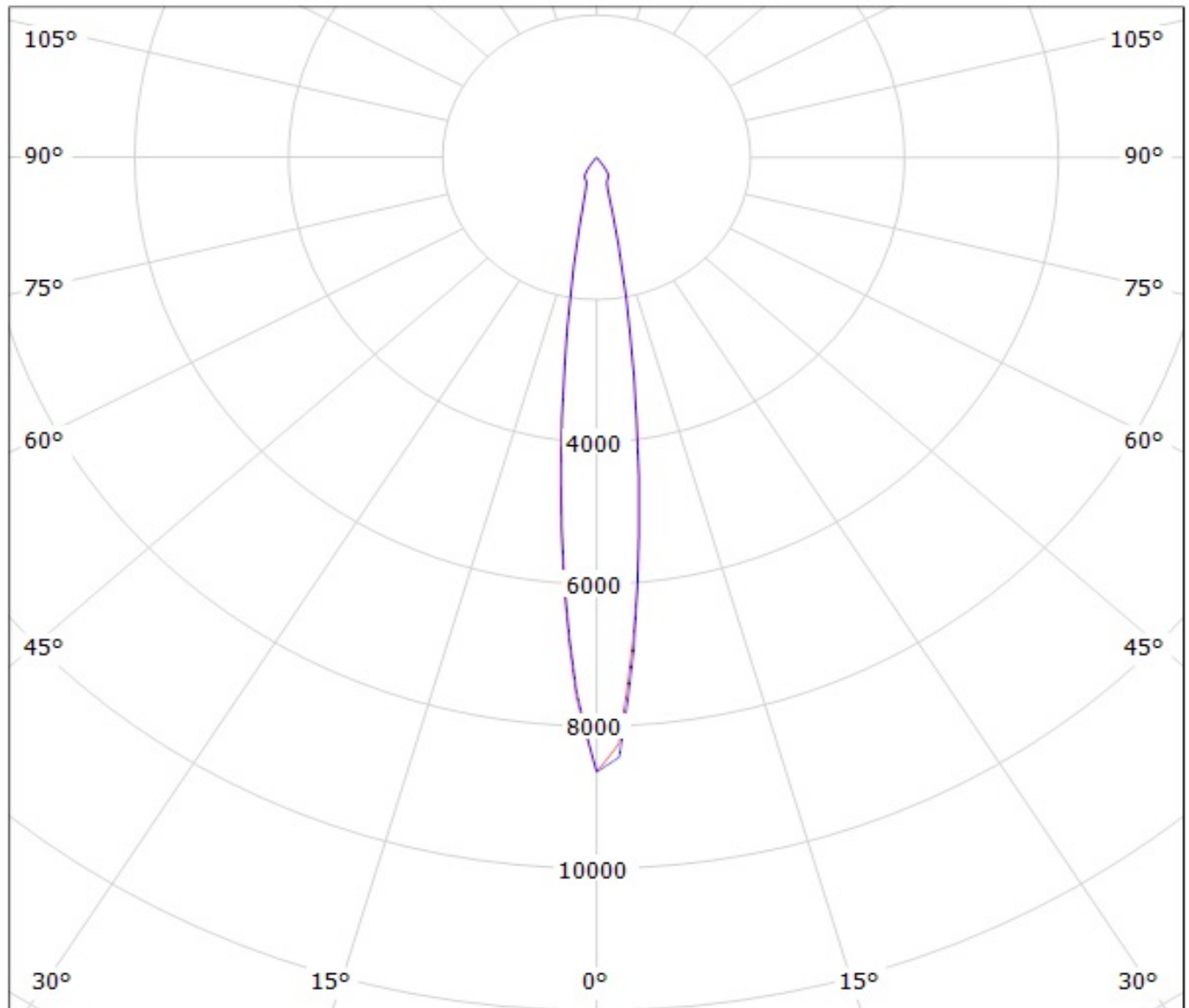
Luminaire: Ledil FCN14709_BARBARA-S-PF-RZ_(CXA1520)

Lamps: 1 x CREE_CXA1520_(CXA1520-30F-N4-N0H-00001)

_821.16lm@250mA_CCT=3070K_P=7.88W_I=0.25A



Luminaire: LEDil Oy FCN14283_BARBARA-S-PF_(CXA15) Efficiency=91%
Lamps: 1 x Cree CXA15 (CXA1507-30F-F4-N0H-00000) 212lm @ 50mA CCT=3100K P=1.7W I=50mA



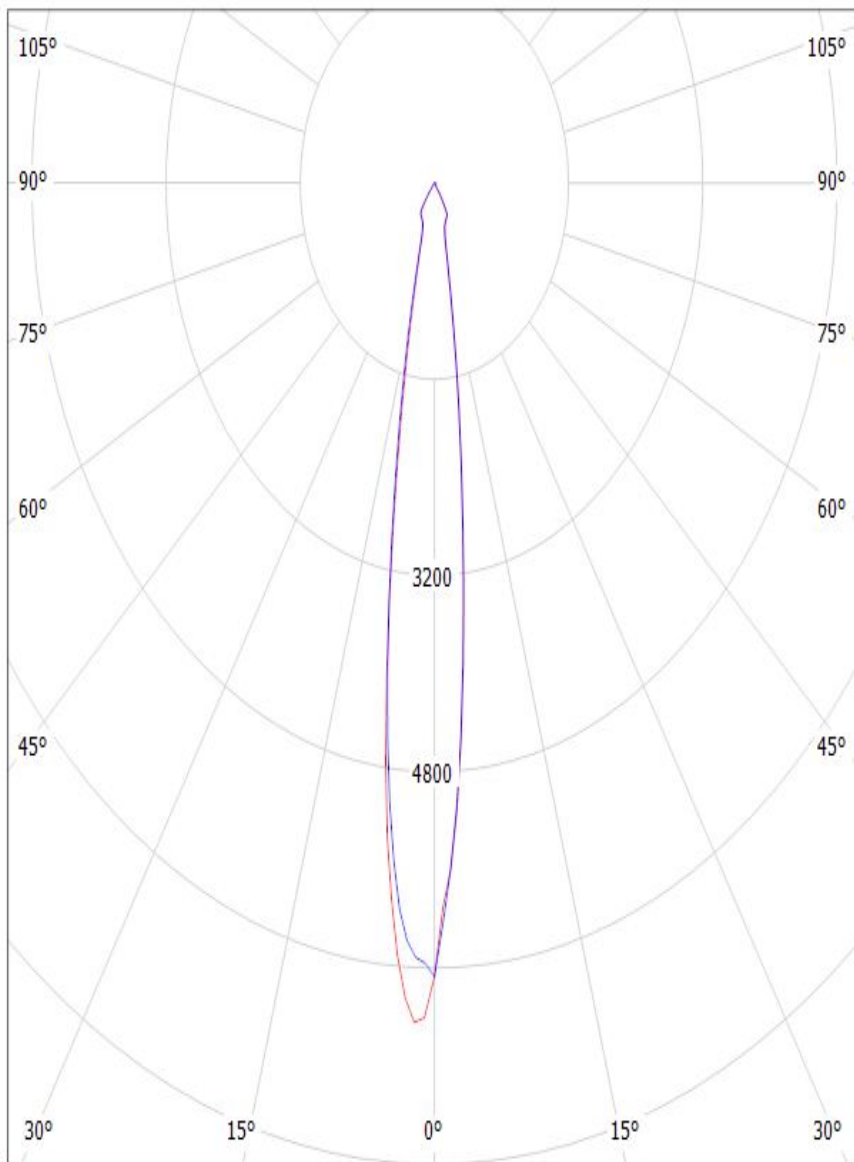
cd/klm

— C0 - C180

— C90 - C270

Luminaire: LEDiL Oy FCN13925_BARBARA-S-PF-VERO13/18_(CXA1520)_(441_Typ_L1) CXA1520_(CXA1520-30F-N4-N04-00001)_(441_Typ_L1)_(C13709_PF-SOCKET-VERO13-18)_995.617lm@250mA_P=8.72401W_I=0.2499A

Lamps: 1 x CXA1520_(CXA1520-30F-N4-N04-00001)_(441_Typ_L1)_(C13709_PF-SOCKET-VERO13-18)_995.617lm@250mA_P=8.72401W_I=0.2499A



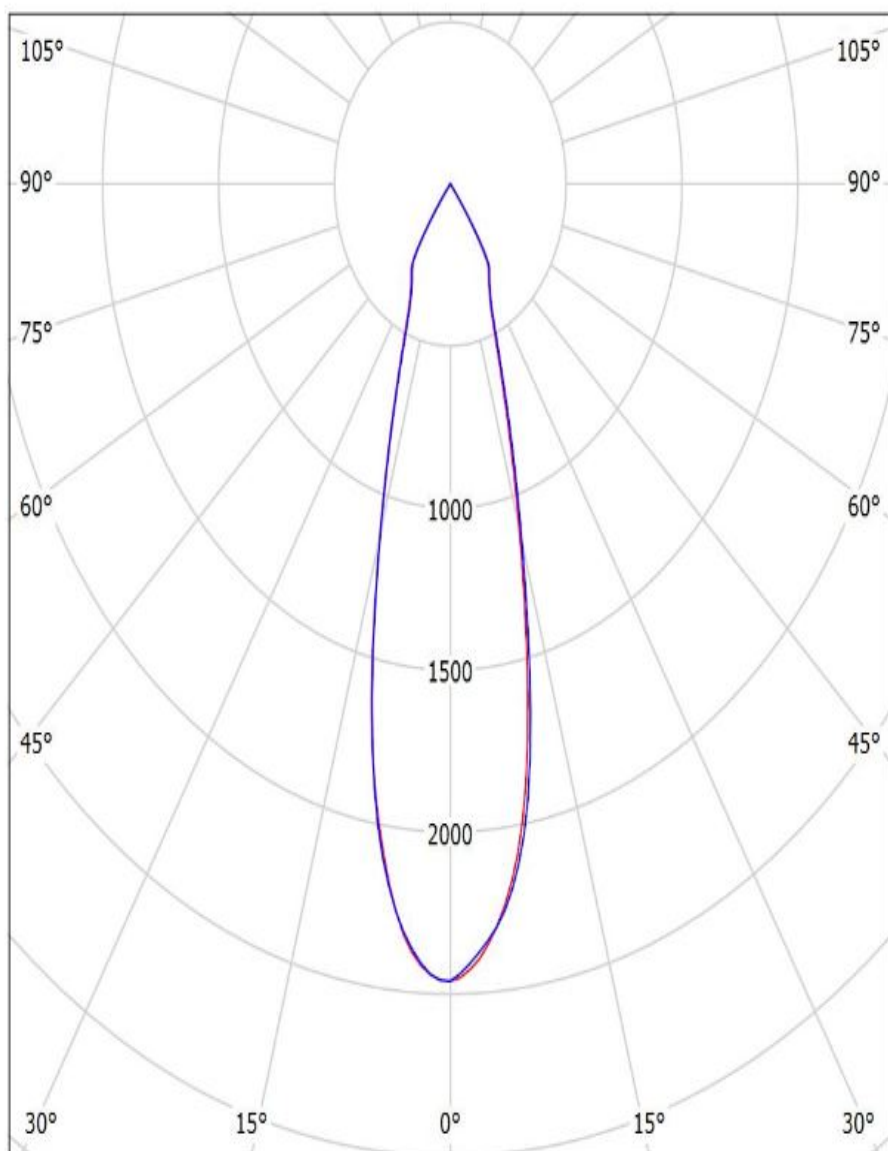
cd/klm

— C0 - C180 — C90 - C270

$\eta = 89\%$

Luminaire: Ledil FCN13927_BARBARA-W-PF-VERO13-18_(CXA1520)_CXA1520_(CXA1520-30F-N4-N0H-00001)_(441_Typ_L1)_(C13709_PF-SOCKET-VERO13-18)_1036.14lm@250mA_P=8.825W_I=0.25A

Lamps: 1 x CXA1520_(CXA1520-30F-N4-N0H-00001)_(441_Typ_L1)_(C13709_PF-SOCKET-VERO13-18)_1036.14lm@250mA_P=8.825W_I=0.25A

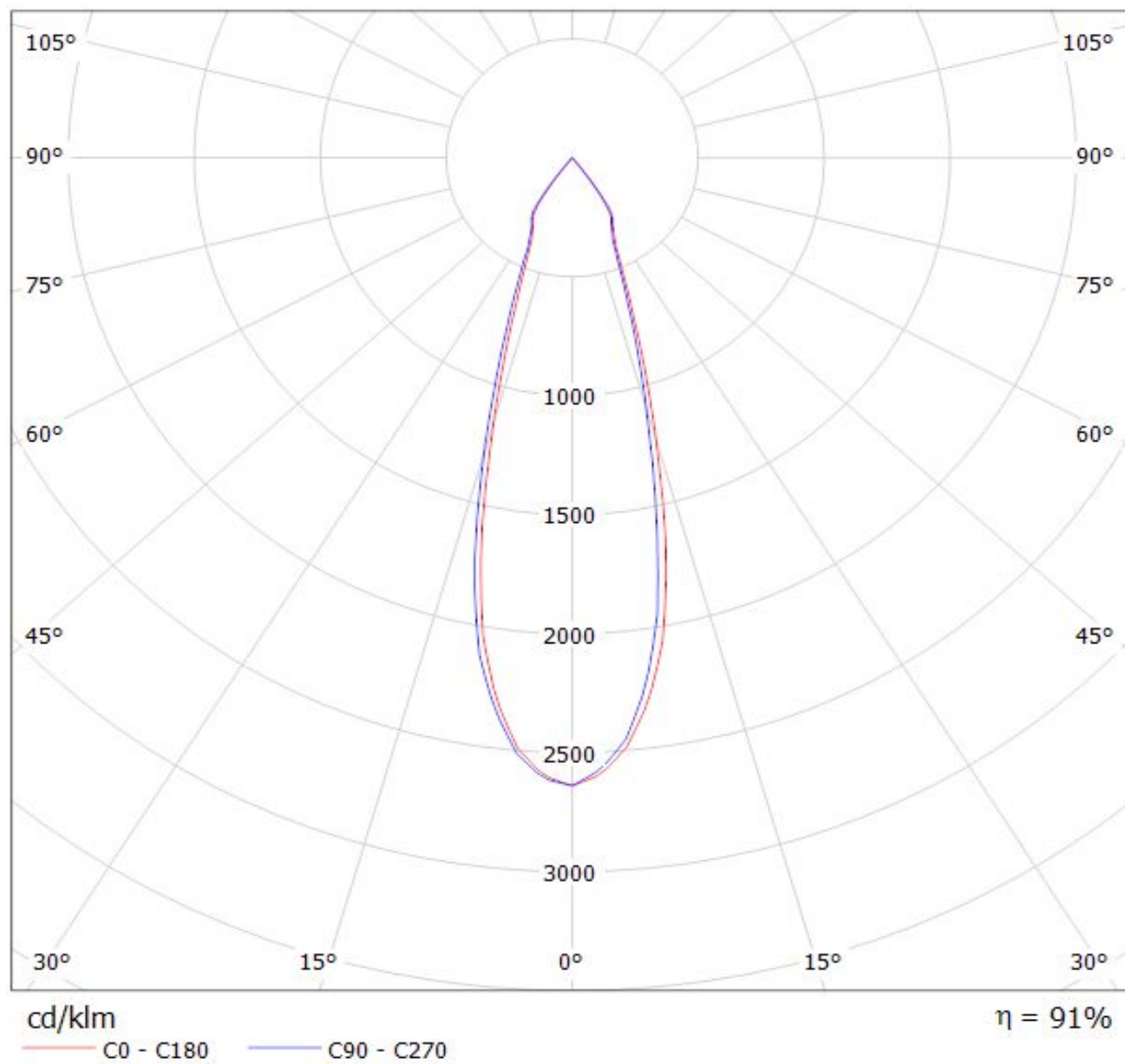


cd/klm

— C0 - C180 — C90 - C270

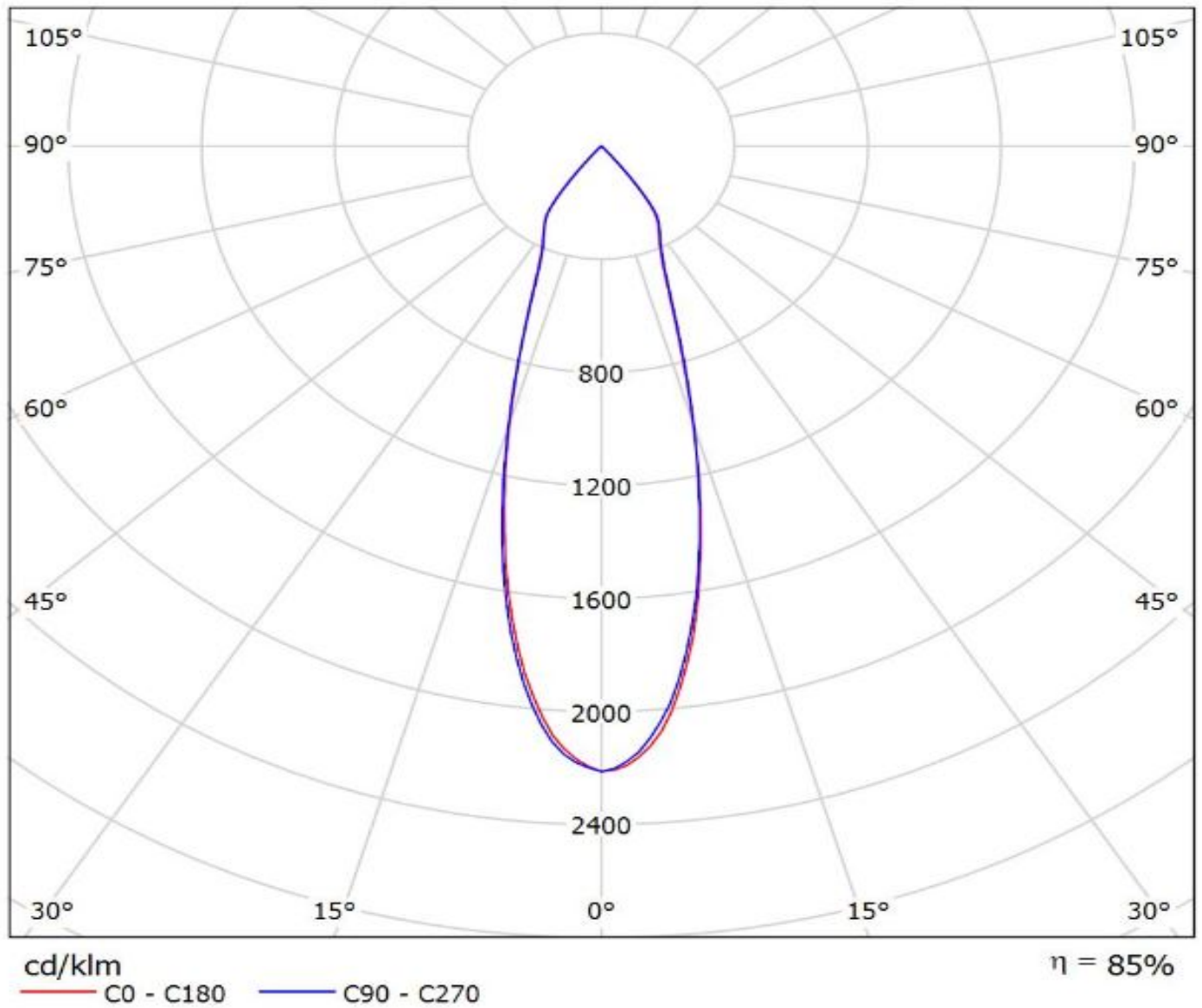
$\eta = 88\%$

Luminaire: LEDiL Oy FCN14284_BARBARA-W-PF_(CXA15)
Lamps: 1 x Cree_CXA1507_214.008lm@50mA_P=1.64838_I=49.4mA

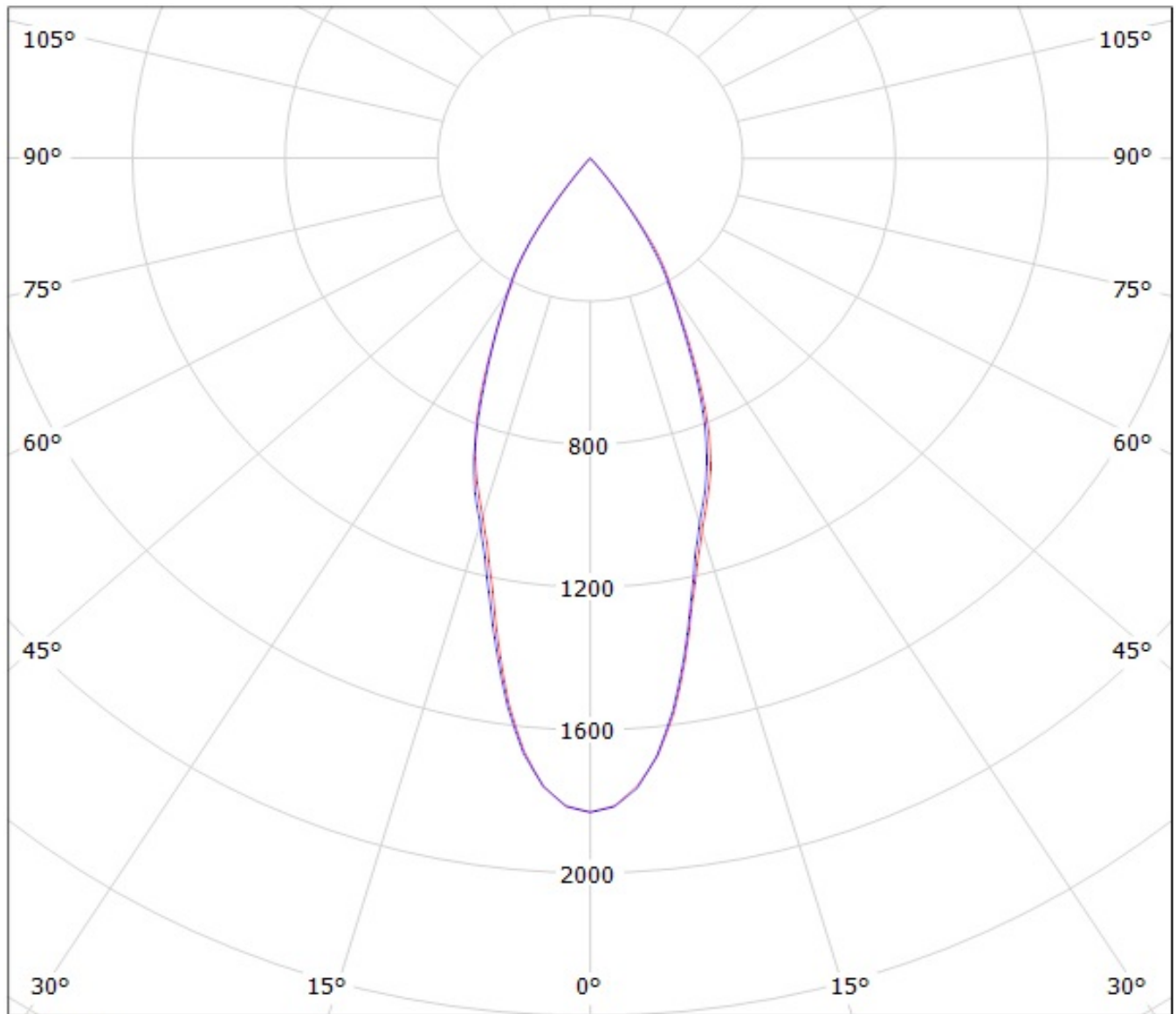


Ledil FCN14710_BARBARA-W-PF-RZ_(CXA1520) / LDC (Polar)

Luminaire: Ledil FCN14710_BARBARA-W-PF-RZ_(CXA1520)
Lamps: 1 x CREE_CXA1520_(CXA1520-30F-N4-N0H-00001)
_821.16lm@250mA_CCT=3070K_P=7.88W_I=0.25A



Luminaire: LEDil Oy FCN14285_BARBARA-WW-PF_(CXA1507) Efficiency=89%
Lamps: 1 x Cree CXA1507 (CXA1507-30F-F4-N0H-00000) 213lm @ 250mA CCT=3100K P=1.7W I=250mA



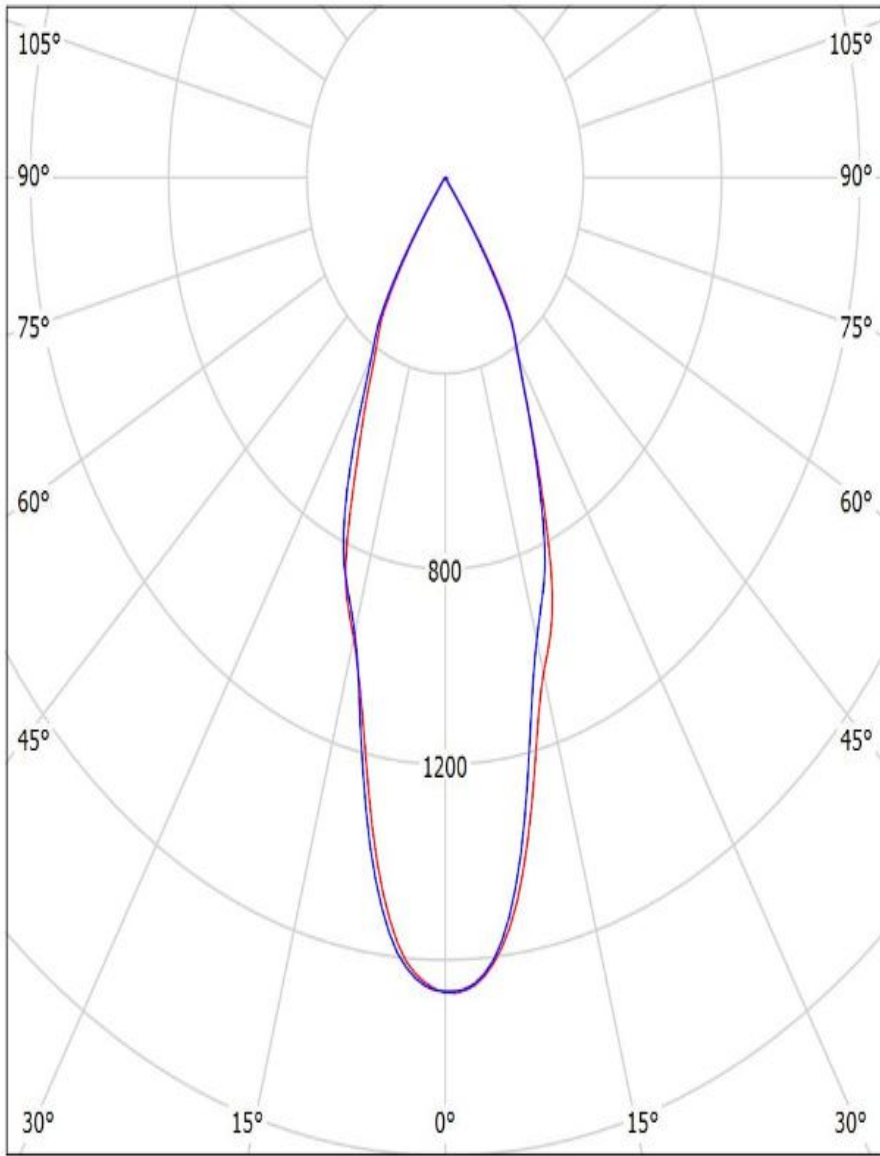
cd/klm

— C0 - C180

— C90 - C270

Luminaire: Ledil FCN13929_BARBARA-WW-PF-VERO13-18_(CXA1520) CXA1520_(CXA1520-30F-N4-N0H-00001)_(441_Typ_L1)_(C13709_PF-SOCKET-VERO13-18)_1036.14lm@250mA_P=8.825W_I=0.25A

Lamps: 1 x CXA1520_(CXA1520-30F-N4-N0H-00001)_(441_Typ_L1)_(C13709_PF-SOCKET-VERO13-18)_1036.14lm@250mA_P=8.825W_I=0.25A



cd/klm

— C0 - C180 — C90 - C270

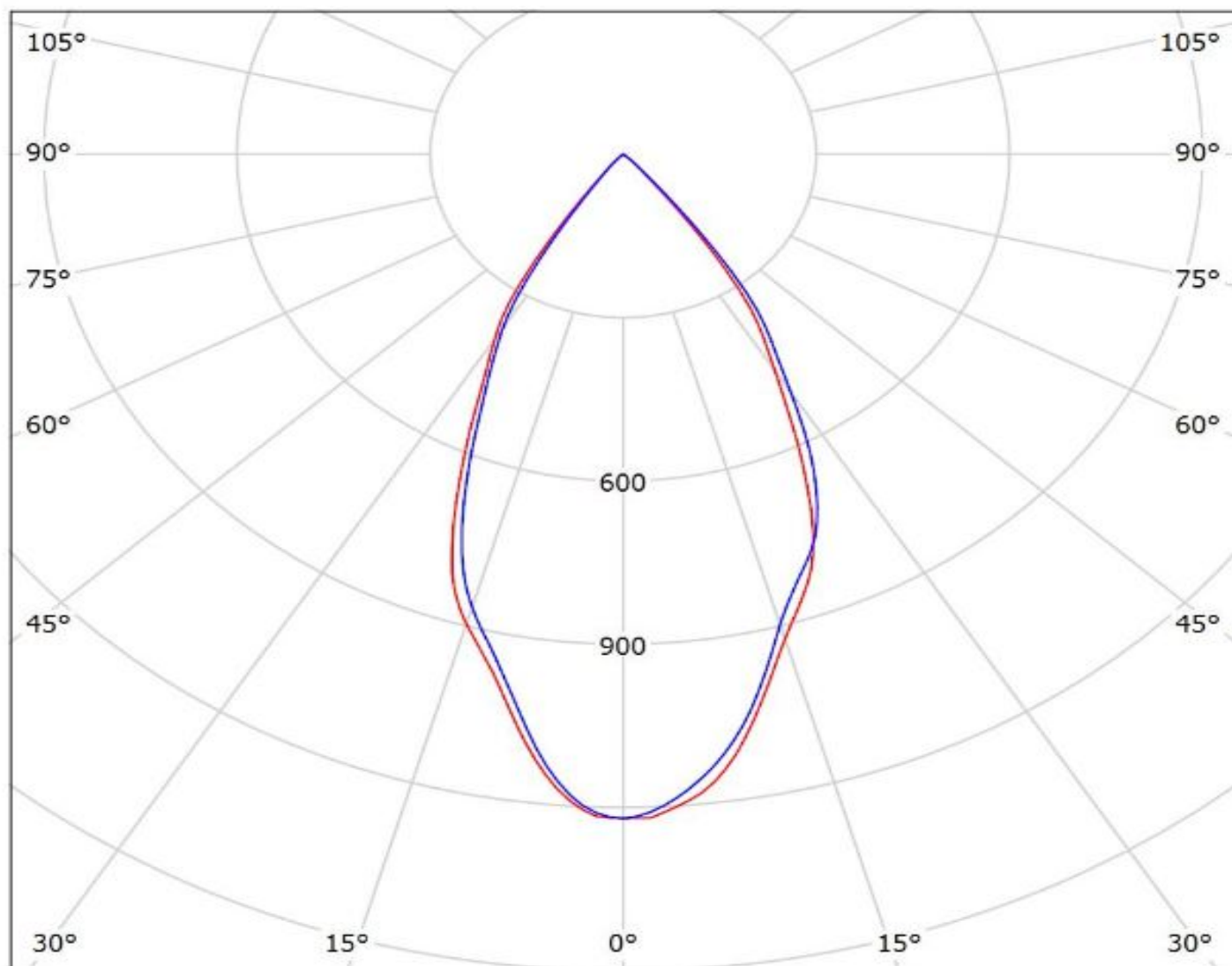
$\eta = 87\%$

Ledil FCN14711_BARBARA-WW-PF-RZ_(CXA1520) / LDC (Polar)

Luminaire: Ledil FCN14711_BARBARA-WW-PF-RZ_(CXA1520)

Lamps: 1 x CREE_CXA1520_(CXA1520-30F-N4-N0H-00001)

_821.16lm@250mA_CCT=3070K_P=7.88W_I=0.25A



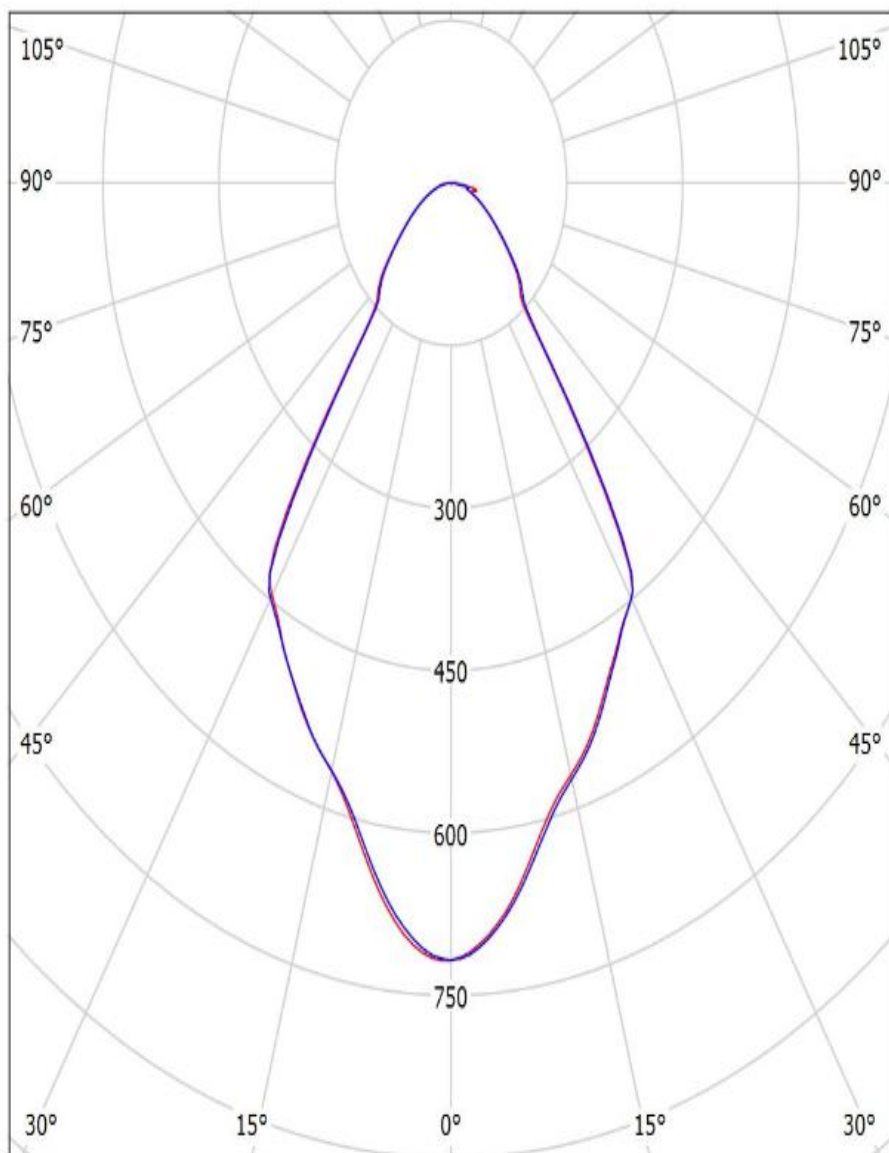
cd/klm

— C0 - C180 — C90 - C270

$\eta = 85\%$

Luminaire: Ledil FCN14311_BARBARA-XW-PF-VERO13-18_(CXA1520)_CXA1520_(CXA1520-30F-N4-N0H-00001)_(441_Typ_L1)_(C13709_PF-SOCKET-VERO13-18)_1036.14lm@250mA_P=8.825W_I=0.25A

Lamps: 1 x CXA1520_(CXA1520-30F-N4-N0H-00001)_(441_Typ_L1)_(C13709_PF-SOCKET-VERO13-18)_1036.14lm@250mA_P=8.825W_I=0.25A



cd/klm

— C0 - C180 — C90 - C270

$\eta = 90\%$

Ledil FCN14712_BARBARA-XW-PF-RZ_(CXA1520) / LDC (Polar)

Luminaire: Ledil FCN14712_BARBARA-XW-PF-RZ_(CXA1520)
Lamps: 1 x CREE_CXA1520_(CXA1520-30F-N4-N0H-00001)
_821.16lm@250mA_CCT=3070K_P=7.88W_I=0.25A

