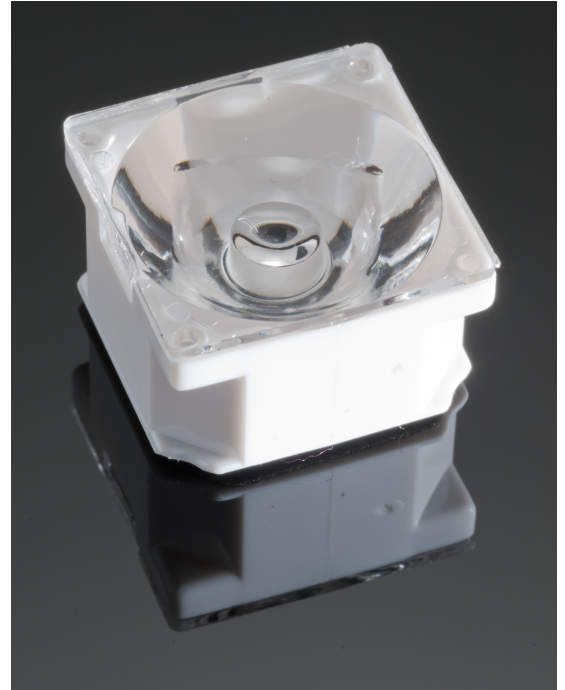


LAURA-RS-PIN

~8° spot beam optimized for CREE XP-E.
Assembly with white holder, installation tape
and location pins.

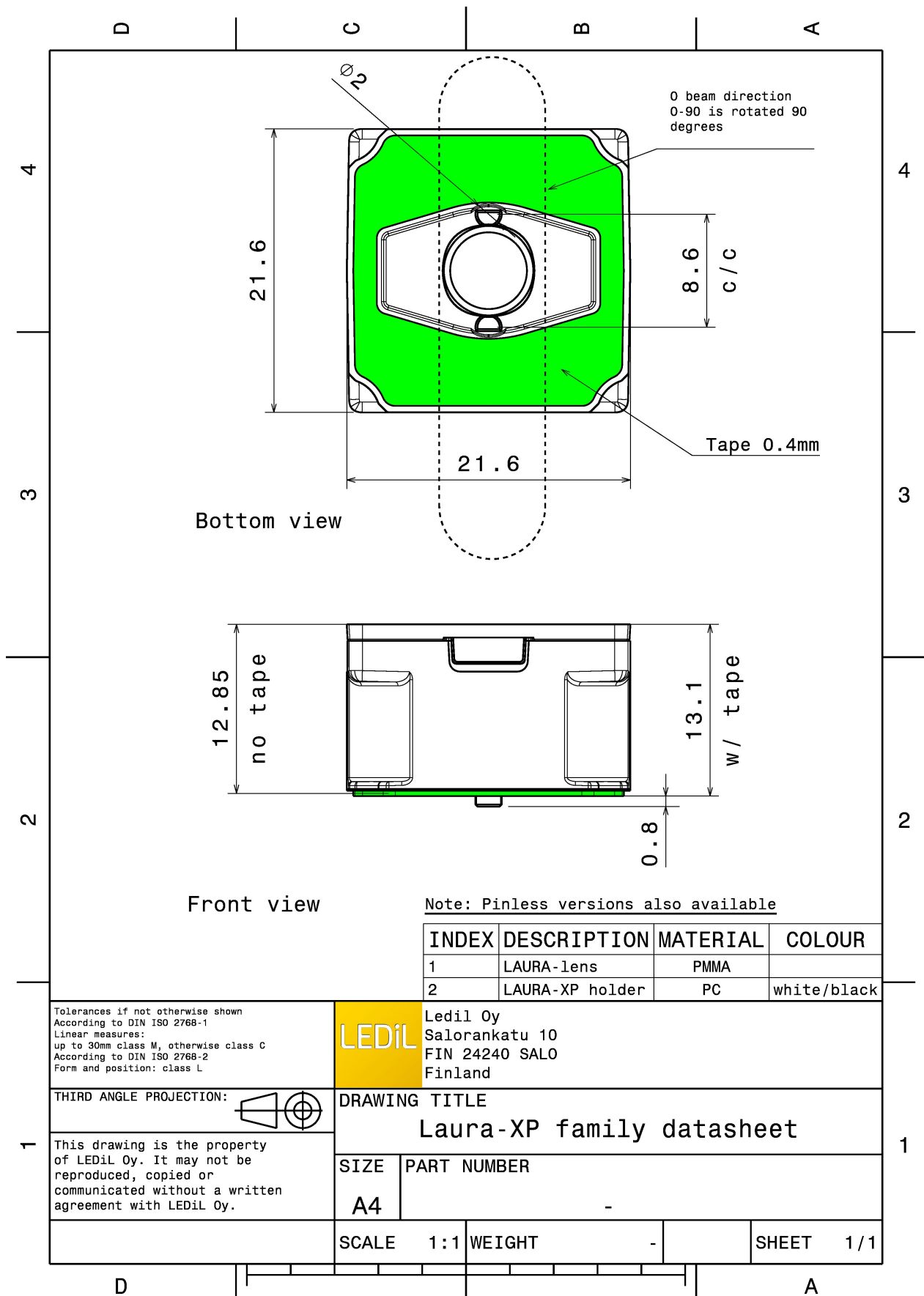
TECHNICAL SPECIFICATIONS:

Dimensions	21.6 mm
Height	13.1 mm
Fastening	tape, pin
Colour	white
Box size	
Box weight	7.6 kg
Quantity in Box	1440 pcs
ROHS compliant	yes ⓘ



MATERIAL SPECIFICATIONS:

Component	Type	Material	Colour
LAURA-RS	Single lens	PMMA	clear
LAURA-PIN-XP-HLD-WHT	Holder	PC	white
ROSE-TAPE	Tape	PU tape	black



PHOTOMETRIC DATA (MEASURED):



LED XP-E
FWHM 8.0°
Efficiency 93 %
Peak intensity 33.200 cd/lm
LEDs/each optic 1
Light colour White
Required components:



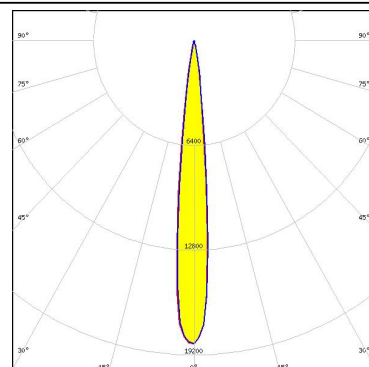
LED XP-G
FWHM 11.0°
Efficiency 93 %
Peak intensity cd/lm
LEDs/each optic 1
Light colour White
Required components:



LED LUXEON Rebel
FWHM 7.0°
Efficiency 93 %
Peak intensity 34.000 cd/lm
LEDs/each optic 1
Light colour White
Required components:



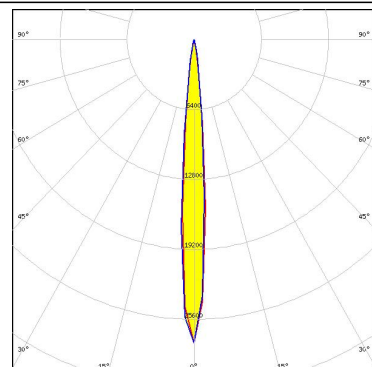
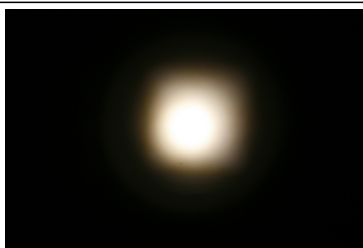
LED LUXEON T
FWHM 11.0°
Efficiency 92 %
Peak intensity 18.500 cd/lm
LEDs/each optic 1
Light colour White
Required components:



PHOTOMETRIC DATA (MEASURED):



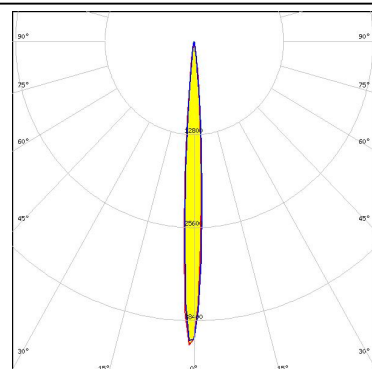
LED NCSxx19B
 FWHM 10.0°
 Efficiency 91 %
 Peak intensity 27.800 cd/lm
 LEDs/each optic 1
 Light colour White
 Required components:



LED Oslon Square EC
 FWHM 9.0°
 Efficiency 93 %
 Peak intensity 20.000 cd/lm
 LEDs/each optic 1
 Light colour White
 Required components:




LED Oslon SSL 150
 FWHM 7.0°
 Efficiency 92 %
 Peak intensity 42.000 cd/lm
 LEDs/each optic 1
 Light colour White
 Required components:



LED SFH 4725S
 FWHM 10.0°
 Efficiency %
 Peak intensity cd/lm
 LEDs/each optic 1
 Light colour White
 Required components:

PHOTOMETRIC DATA (MEASURED):

 SEOUL SEMICONDUCTOR	
LED	Z5
FWHM	7.0°
Efficiency	%
Peak intensity	cd/lm
LEDs/each optic	1
Light colour	White
Required components:	

PHOTOMETRIC DATA (SIMULATED):

LUMILEDS

LED LUXEON H50-2
FWHM 12.0°
Efficiency 92 %
Peak intensity 16.300 cd/lm
LEDs/each optic 1
Light colour White
Required components:

LUMILEDS

LED LUXEON IR Domed 150
FWHM 9.0°
Efficiency 0 %
Peak intensity 0.000 cd/lm
LEDs/each optic 1
Light colour White
Required components:

LUMILEDS

LED LUXEON IR Domed 60
FWHM 9.2°
Efficiency 94 %
Peak intensity 0.000 cd/lm
LEDs/each optic 1
Light colour White
Required components:

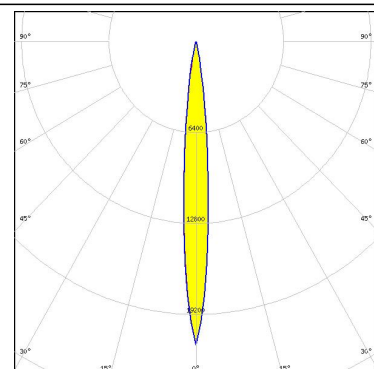
LUMILEDS

LED LUXEON IR Domed 90
FWHM 9.0°
Efficiency 94 %
Peak intensity 0.000 cd/lm
LEDs/each optic 1
Light colour White
Required components:

PHOTOMETRIC DATA (SIMULATED):

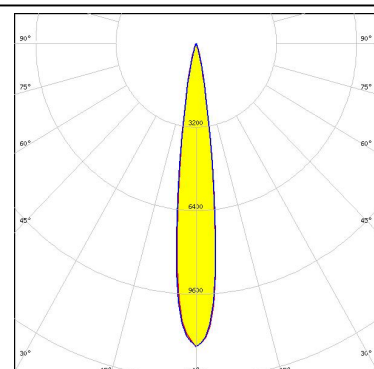


LED NVSxE21A
 FWHM 10.0°
 Efficiency 94 %
 Peak intensity 21.350 cd/lm
 LEDs/each optic 1
 Light colour White
 Required components:



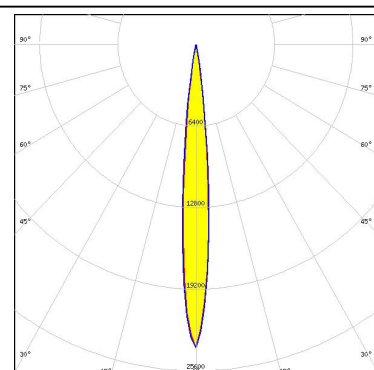
Opto Semiconductors

LED OSCONIQ P 3737 (3W version)
 FWHM 14.0°
 Efficiency 94 %
 Peak intensity 11.620 cd/lm
 LEDs/each optic 1
 Light colour White
 Required components:



Opto Semiconductors

LED SFH 4715AS
 FWHM 10.0°
 Efficiency 94 %
 Peak intensity 23.800 cd/lm
 LEDs/each optic 1
 Light colour White
 Required components:



Opto Semiconductors

LED SFH 4715S
 FWHM 9.5°
 Efficiency %
 Peak intensity cd/lm
 LEDs/each optic 1
 Light colour White
 Required components:

PHOTOMETRIC DATA (SIMULATED):

OSRAM

Opto Semiconductors

LED SFH 4770S
FWHM 10.0°
Efficiency 94 %
Peak intensity cd/lm
LEDs/each optic 1
Light colour White
Required components:

SAMSUNG

LED LM301B
FWHM 9.0°
Efficiency 94 %
Peak intensity 24.480 cd/lm
LEDs/each optic 1
Light colour White
Required components:

GENERAL INFORMATION:

NOTE: The typical beam angle will be changed by different color, chip size and chip position tolerance. The typical total beam angle is the full angle measured where the luminous intensity is half of the peak value.

MATERIALS:

As part of our continuous research and improvement processes, and to ensure the best possible quality and availability of our products, LEDiL reserves the right to change material grades without notice.

PRODUCT DATA USER AGREEMENT AND DISCLAIMER:

The measured data in the provided downloadable LEDiL Product Datasheets and Mechanical 2D-Drawings is rounded and provided as reference for planning. LEDiL Oy's optical specifications have been verified by conducting performance testing of the products in accordance with the company's quality system. The reported data are averaged results of multiple measurements with typical variation. LEDiL Oy reserves the right to without prior notification make changes and improvements to its products.

LEDiL Oy assumes neither warranty, nor guarantee nor any other liability of any kind for the contents and correctness of the provided data. The provided data has been generated with highest diligence but the provided data may in reality not represent the complete possible variation range of all intrinsic parameters. Therefore, in certain cases a deviation from the provided data could occur.

LEDiL Oy reserves the right to undertake technical changes of its products without further notification which could lead to changes in the provided data. LEDiL Oy assumes no liability of any kind for the possible deviation from any provided data or any other damage resulting from the usage of the provided data.

The user agrees to this disclaimer and user agreement with the download or usage of the provided files.

LEDiL Oy

Joensuunkatu 13
FI-24240 SALO
Finland

LEDiL Inc.

228 West Page Street
Suite D
Sycamore IL 60178
USA

Local sales and technical support

[www.ledil.com/
where_to_buy](http://www.ledil.com/where_to_buy)

Shipping locations

Salo, Finland
Hong Kong, China

Distribution Partners

[www.ledil.com/
where_to_buy](http://www.ledil.com/where_to_buy)