

1.0

LED 8W | 220-240VAC | 50-60Hz
PCB 3-step | incl. PS | phase-cut dim
aluminium powder coated
opal glass

0.83kg IP65 0.3

3000K | >80 CRI | 665lm

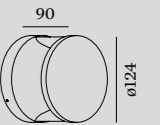
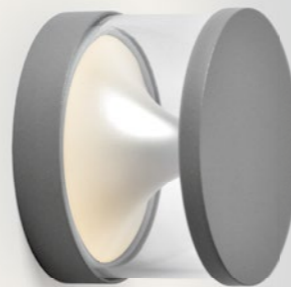
CODE
717474W4
717474D4

OPTIONAL

big cover

CODE
911141W1
911141D1

more details on page 592



2.0

LED 8W | 220-240VAC | 50-60Hz
PCB 3-step | incl. PS | phase-cut dim
aluminium powder coated
clear glass

0.83kg IP65 0.3

3000K | >80 CRI | 720lm

CODE
717374W4
717374D4

OPTIONAL

big cover

CODE
911141W1
911141D1

more details on page 592