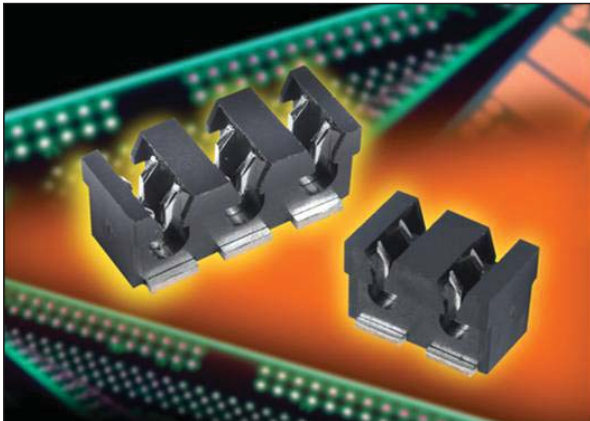


9176 Series



Wire to Board Strip IDC Connector



The 9176 series from AVX offers customers the ability of connecting individual wires to a single row of contacts using IDC technology.

Available as a 2 or 3 pin connector it is both low profile and has a small PCB footprint. The connector is SMT assembled to the PCB prior to assembly of the wire.

Using a small application tool, the wires are then inserted into the contact slot. This process cuts the insulation and enables the individual conductors of the wire to form a homogeneous joint. The shape of the molding also forms a restraint to the wire when fully inserted in the contact. These connectors are supplied in tape and reel for easy pick and place. The wire options are 18 to 24 AWG stranded wire.

APPLICATIONS

- PCB to PCB individual wire interconnect
- Device to PCB interconnect (LED Modules and LED Strips)

FEATURES AND BENEFITS

- Small single row IDC
- Rated at 10 amps
- Uses both stranded wire (18 to 24 gauge)
- Insulators are end to end stackable for higher pin counts
- Uses simple hand tool for higher volume applications

HOW TO ORDER

00	9176	00X
Prefix	Series	Number of Ways
		001 = 1
		002 = 2
		003 = 3

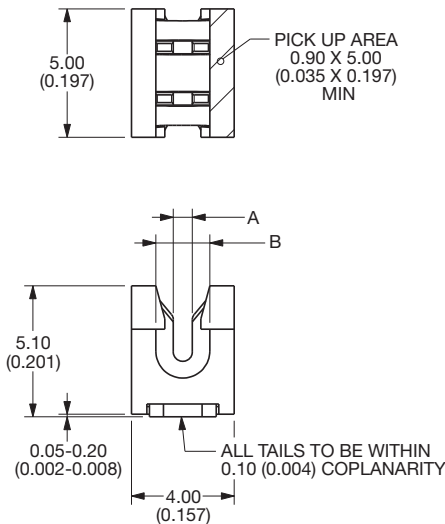
0XX		
Wire Gauge Size		
Code	Accepted Wire Gauge	Wire Insulation
001	18 Gauge Stranded	∅ 1.6 - 2.1
011	20 Gauge Stranded	∅ 1.6 - 2.1
022	22 Gauge Stranded	∅ 1.1 - 1.6
032	24 Gauge Stranded	∅ 1.1 - 1.6

X		
Insulator Color		
Code	Color	Availability
0	Black	Standard
1	White	Optional

06
Plating Option
06 = Pure Tin All Over

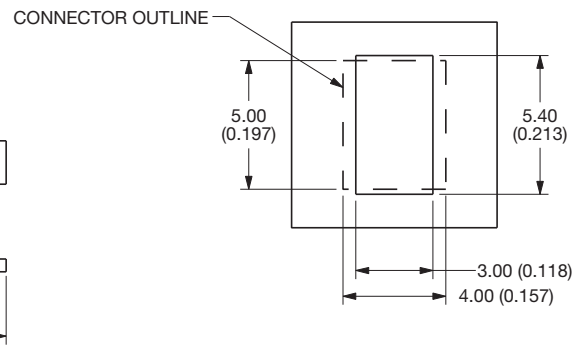


1 WAY IDC CONNECTOR



SMT PCB LAYOUT

PURE TIN PADS

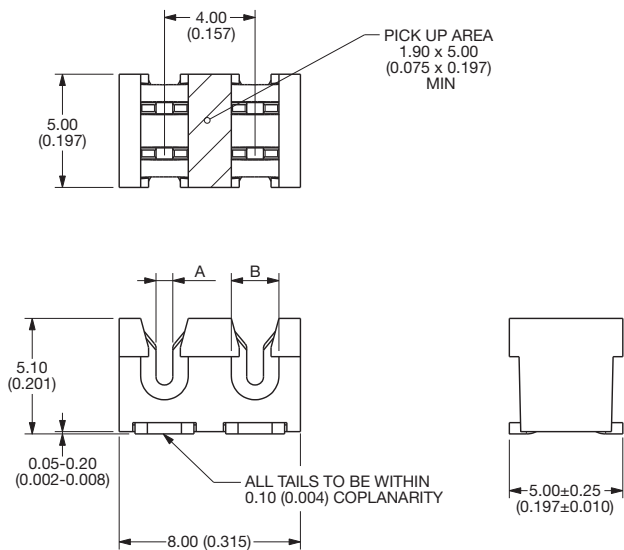


9176 Series

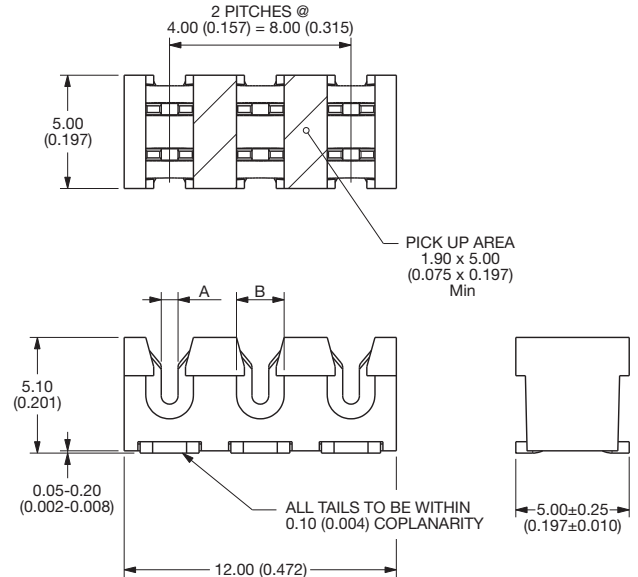


Wire to Board Strip IDC Connector

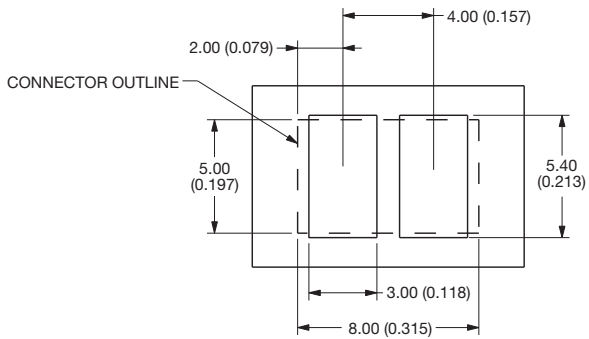
2 WAY IDC CONNECTOR



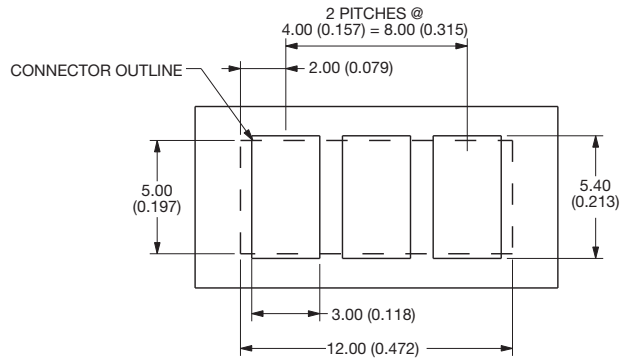
3 WAY IDC CONNECTOR



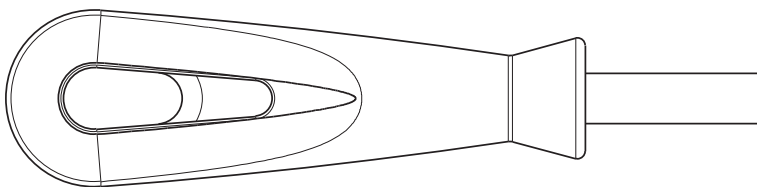
SMT PCB LAYOUT PURE TIN PADS



SMT PCB LAYOUT PURE TIN PADS

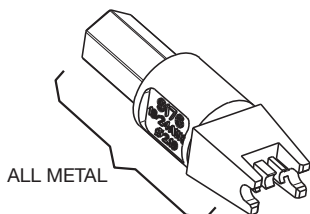


HAND INSERTION TOOLING



UNIVERSAL HANDLE

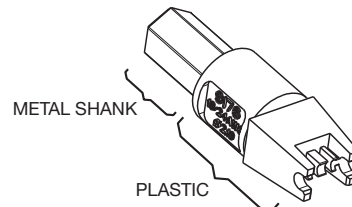
Details	Tool Part Number
6.35 A/F HEX BIT HOLDER	06 7000 7730 01 000



ALL METAL

HIGH PRODUCTION Metal

Max Insulation Dia	Tool Part Number
∅ 2.10	06 9176 7017 01 000
∅ 1.60	06 9176 7017 02 000



METAL SHANK

PLASTIC

MED PRODUCTION Metal/Plastic

Max Insulation Dia	Tool Part Number
∅ 2.10	06 9176 7016 01 000
∅ 1.60	06 9176 7016 02 000

